

Tailored Optical & Ethernet Solutions

for Seamless Data Center, Industrial and Campus Connectivity



PRODUCT BROCHURE



Data Center Network



Industrial Network



Integrated Network



Access Network



Smart Cloud Network

COMPANY PROFILE

Lanao Communication Technology Limited, established in 2013, has been steadfastly dedicated to designing, developing, and manufacturing cutting-edge Optical and Ethernet Transmission products. Our goal is to foster a more interconnected world through efficient, sustainable, and transformative communication technologies.

We offer a diverse product portfolio across sectors like Industrial Networking, Telecommunication, Data Centers, Enterprise Networks, IoT, Safe City, Infrastructure Development and Broadband Services. We collaborate globally with Enterprises, Carriers, Integrators, Telecom Operators, ISPs, as well as reputable Distributors. Our solutions foster cost optimization, enhanced scalability, service innovation, and eco-friendly practices to meet market demands. With certifications such as cETL, CE, FCC, RoHS, REACH, UKCA, NOM, EAC, KC, BIS etc., we are committed to quality and compliance. Let's unite under 'Pioneering Connectivity, Empowering Progress'.





PART 01

Data Center
Network



PART 02

Industrial
Network



PART 03

Integrated
Network



PART 04

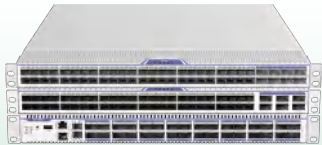
Access
Network



PART 05

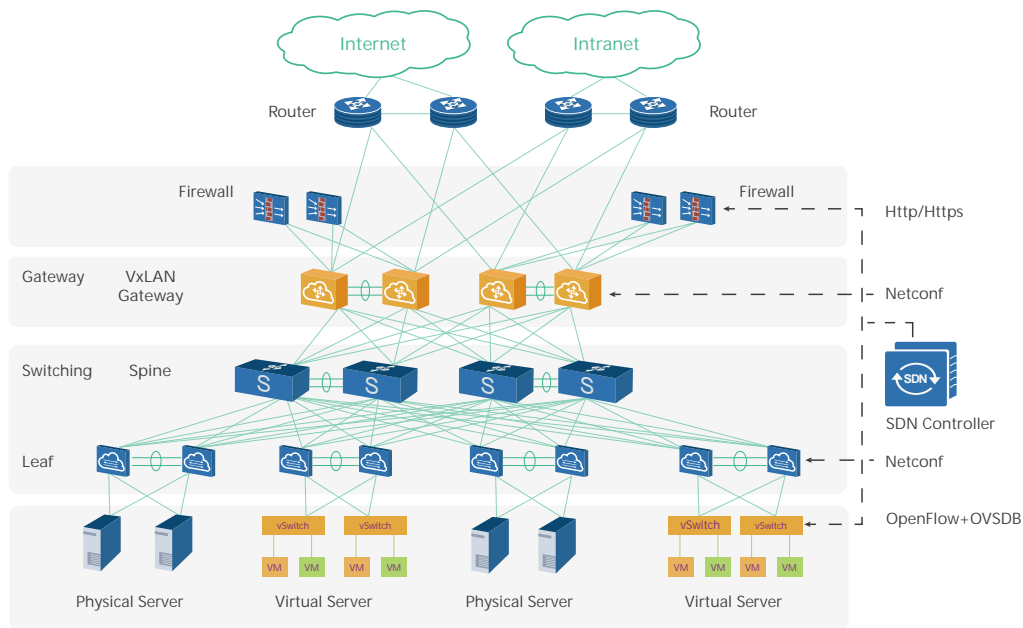
Smart Cloud
Network

Data Center Network

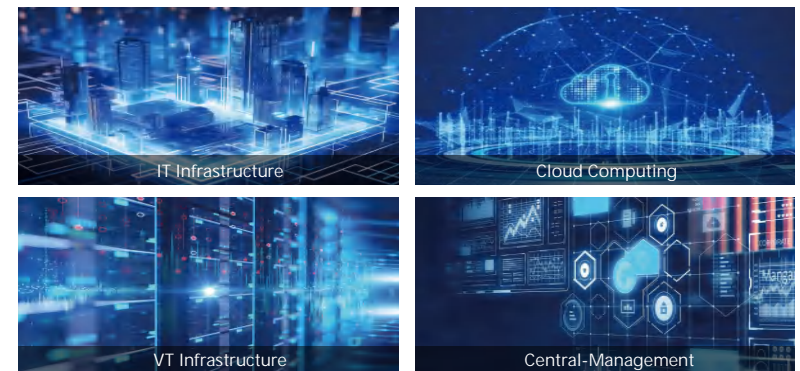


The Data Center Switches are high-performance, scalable solutions designed for AI, 5G, and next-generation communication needs. They provide reliable, secure connectivity for servers, storage, and network devices, ensuring seamless operation in modern data centers. Supporting leaf/spine and top-of-rack (ToR) deployments, with port speeds ranging from 10Gbps to 400Gbps and high port density (single 1U), they offer full rack connectivity while maximizing energy efficiency. With Open Network Install Environment (ONIE) support, they enable zero-touch installation of SONiC or OcNOS systems, streamlining deployment and minimizing latency for optimized data transmission. Perfect for high-demand industries, they deliver enhanced performance, scalability, and future-proof reliability for today's data-driven applications.

Application



Data Center Network Architecture



Utilizing Diverse Platforms and Operating Systems for Tailored Solutions



Data Center Switch Broadcom Series

Data Center Switch
Broadcom Series



Model	DCSL3B-06Q48X	DCSL3B-08C48X	DCSL3B-08C48K	DCSL3B-32C02X
Fixed Ports	48*10G SFP+, 6*40G QSFP+	48*10G SFP+, 8*40/100G QSFP28	48*25G SFP28, 8*40G QSFP+/100G QSFP28	32*100G QSFP28/40G QSFP+, 2*10G SFP+
Port Number	54	56	56	34
Main Chip	Broadcom BCM56771	Broadcom BCM56771	Broadcom BCM56873	Broadcom BCM56870
CPU	NXP LS1046A			
Throughput	1000Mpps		2000Mpps	
Switching Capacity	2.56Tbps		4Tbps	6.4Tbps
VLAN	4K VLANs; 1:1 & 2:2 VLAN Mapping; QinQ, selective QinQ; MAC based VLAN; Protocols based VLAN; Guest VLAN; Voice VLAN			
Port Trunk	LACP; 32 trunk groups at most, up to 8 ports in each group			
MAC	128K MAC; Static MAC; Dynamic MAC			
IP Routing	Static Routing; OSPF; ISIS; BGP, GRE			
Multicast	IGMP snooping, IGMP filter, IGMP Proxy and IGMP fast leave; Multicast replication between VLANs; PIM-SM; PIM-DM; Source Specific Multicast (SSM)			
Reliability	STP, RSTP, MSTP; R-Link protection, VRRP, Trunk, Redundancy power BPDU Guard, Loop protection, Root protection			
QoS/ACL	Packet filtering, Time range ACL, Rate limiting with granularity at 64Kbps, Port-based traffic policing and two-rate three-color CAR, Flexible scheduling algorithms SP/PQ/DRR/SP/PQ+DRR			
Security	DoS attack defense, ARP attack defense, IP source guard, Port isolation and security, Black hole MAC address entries, 802.1x authentication, RADIUS authentication, SSH v2.0			
Energy Saving	Dynamic fan speed adjusting			
Management & Maintenance	Port and Flow-based mirroring, CLI, Telnet, Console, SNMP v1/v2/v3, RMON, LLDP, Cluster network, Syslog, Traplog, Loading and upgrade via FTP/TFTP, Port loopback detection			
Fan Unit	4 hot-swappable cooling fans			
Input Voltage	100V to 240V AC, 50/60Hz; -48V to -60V DC			
Power Consumption	≤180W	≤200W	≤230W	≤360W
Dimension (LxWxH)	440*400*44mm			
Net Weight	7.90kg	8.1kg		7.95kg
Operating Temperature	0 ℃ - 45 ℃			

Data Center Switch Marvell Series

Data Center Switch
Marvell Series



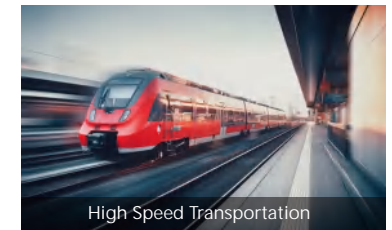
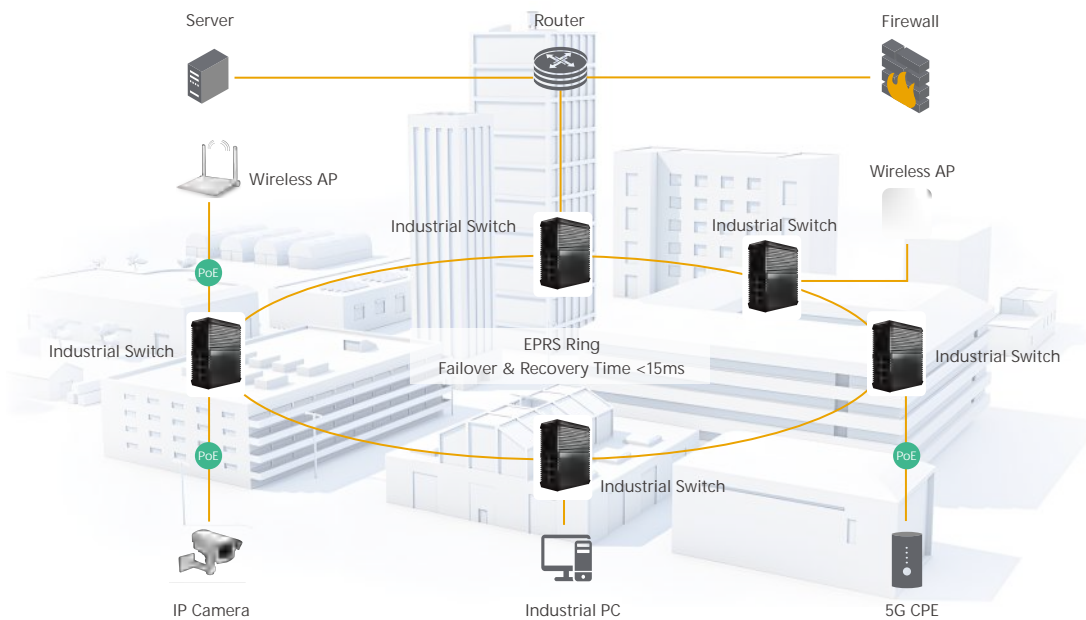
Model	DCSL3M-08C48K	DCSL3M-32E02X	DCSL3M-32C02X	DCSL3M-06C24X	DCSL3M-04C16X-PTP
Fixed Ports	48*25G SFP28, 8*100G QSFP28	32*400G QSFP56-DD, 2*10G SFP+	32*100G QSFP28, 2*10G SFP+	24*10G SFP+, 6*100G QSFP28	16*10G SFP+, 4*100G QSFP28
Port Number	56	34	34	30	20
Main Chip	Marvell Falcon 98CX8514	Marvell Falcon 98CX8580	Marvell Falcon 98CX8522	Marvell Aldrin2 98DX8548	Marvell Aldrin2 98DX8548 PTP Renesas 8A34002E
CPU	Intel Broadwell-DE D1508			MaverII Octeon TX2 CN9130	
Memory	8GB DDR4				
Storage	SSD: 64GB eMMC, optional M.2 STAT slot				
Power Supply Units	2xAC110~240V, 550w 1+1 Hot-swappable	2 x AC110~240V, 1600w 1+1 Hot-swappable	2 x AC110~240V, 800w 1+1 Hot-swappable	2 x AC110~240V, 350w 1+1 Hot-swappable	2 x AC110~240V, 350w 1+1 Hot-swappable
Fan Unit	5 (4+1 redundant) hot-swappable cooling fans				
Operating Altitude	3000m max				
MTBF	40 Years				
MTTR	1 Hour				
Switching Capacity	4.0 Tbps	25.6 Tbps	6.4 Tbps	2.18 Tbps	2.18 Tbps
Forwarding Rate	2.8 Gpps	56 Gpps	2.8 Gpps	0.6 Gpps	0.6 Gpps
Jumbo frames	Yes				
Buffer	24M	48M	24M	6M	6M
Transmit Descriptors	192K	384K	192K	32K	32K
Relative Humidity	5%-95% (non-condensing)	5%-95% (non-condensing)	5%-95% (non-condensing)	5%-95% (non-condensing)	5%-95% (non-condensing)
Power Consumption	≤520W	≤1200W	≤520W	≤250W	≤250W
Dimension (LxWxH)	445*469*44mm	445*540*44mm	445*540*44mm	445*469*44mm	445*469*44mm
Net Weight	9.6kg	13.0kg	11.0kg	9.3kg	9.0kg
Operating Temperature	0°C ~ 45°C				

Industrial Network



The industrial ethernet switches are built to withstand the toughest environments, delivering a cost-effective, reliable, and secure solution for creating resilient industrial networks. Whether you require a robust switch for point-to-point connections or a managed switch for redundancy and network optimization, these switches are perfectly suited for high-demand applications in intelligent transportation systems, smart cities, utilities, and surveillance. Equipped with PoE+ and PoE++ power per port, these switches effectively support power-hungry devices like IP cameras, WLAN access points, and industrial IoT devices, ensuring seamless connectivity and reliable operation. The flexible installation options, including DIN rail or rack mounting, cater to diverse industrial setups, while the IP66-rated aluminum waterproof configuration ensures durability in harsh outdoor conditions.

Application



High/Low Temp
-40 C ~75 C



Heavy Dust
Fanless IP40



Wide Voltage
DC12-58V



Phoenix Terminal
to Avoid Explode



Redundant
Power AC/DC



Integration with Other
Industrial Equipment

Industrial Din-rail Switch

Unmanaged Switches



Model	IDSAIM-01S02GP-Z4	IDSAIM-02S04GP-Z6	IDSM-04S08GP-Z6	IDSM-04S24GHP-Z6
Fixed Ports				
Port Number	3	6	12	28
RJ45 Port	2*10/100/1000M RJ45	4*10/100/1000M RJ45	8*10/100/1000M RJ45	24*10/100/1000M RJ45
Fiber Port	1*1000M SFP	2*1000M SFP	4*1000M SFP	4*1000M SFP
DIP Switch				
1	1 LFP-LFP(Link Fault Pass-through)	1 I/R-PoE Watchdog	/	/
2	2 LGY-Reserved	2 VLAN-VLAN	/	/
3	3 VLAN-Port Isolation	3 Q/I-Port Isolation	/	/
4	4 BSR-Reset	4 F/P-VIP Power Supply/QoS	/	/
Performance				
Switching Capacity	14G		36G	68G
Packet Forwarding Rate	10.416Mpps		26.78Mpps	50.59Mpps
Buffer	1M		12M	
Jumbo Frame	10K Bytes			
Power				
Input Voltage Range	Redundant Power Input, Dual DC48-58V(PoE)			
Consumption	< 65W(PoE)	< 126W(PoE)	< 250W(PoE)	< 386W(PoE)
PoE Port and Protocol	Port 1-2 802.3af/at	Port 1-4 802.3af/at	Port 1-8 802.3af/at	Port 1-24 802.3 af/at (Port 1-2, 23-24 802.3bt)
Physical and Environmental				
Dimension (WxDxH)	31*91*118mm	48*104*143mm		94*104*118mm
Net Weight	0.4kg	0.6kg		1.0kg
Operating Temperature	-40℃ ～ +75℃			

Industrial Din-rail Switch

Managed Switches



Model	IDSL3LM-02S04GHP-SU-L	IDSL3LM-04S08GP-SU-L	IDSL3M-04X16GP-SU-L	IDSL3M-04X24GHP-SU-L
Fixed Ports				
Port Number	6	12	20	28
Copper Port	4*10/100/1000M RJ45	8*10/100/1000M RJ45	16*10/100/1000M RJ45	24*10/100/1000M RJ45
Fiber Port	2*1G/2.5G SFP	4*1G/2.5G SFP	4*1G/2.5G/10G SFP+	4*1G/2.5G/10G SFP+
Performance				
Switching Capacity	18G	36G	112G	128G
Packet Forwarding Rate	26.7Mpps	53.5Mpps	166.6Mpps	190Mpps
MAC	16K			
Buffer	12M			
Jumbo Frame	10K Bytes			
Management				
Management	Layer 3 Lite: Support WEB/SNMP/VLAN/QoS/RMON/LLDP/IGMP/Mirror/QinQ/Link Aggregation/DDM/ACL/SSH/IPv6 Management/DHCP/NTP/FTP/TFTP/Telnet Server/Ping/Tracert Detection/RSTP/MSTP/ERPS Ring Network/802.1X/Radius/Multicast/Remote Power Failure Alarm/Static Routing/Direct Routing/ARP Layer 3: Support Dynamic Routing Protocols such as OSPF, RIP, VRRP, BGP, ISIS, etc.			
Power				
Input Voltage Range	Redundant Power Input, DC44-57V(802.3af), DC52-57V(802.3at/802.3bt)			
Consumption	≤240W(PoE)		≤370W(PoE)	
PoE Port and Protocol	Port 1-4 802.3 af/at (Port 1-2 802.3bt)	Port 1-8 802.3af/at	Port 1-16 802.3af/at	Port 1-24 802.3af/at (Port 1-4 802.3bt)
Physical and Environmental				
Dimension (WxDxH)	110*115*158mm			
Net Weight	-40°C ~ +75°C	1.35kg	2.2kg	2.45kg
Operating Temperature	-40°C ~ +70°C			

Industrial Rack-mount Switch

Managed Switches



Model	IRSL2M-08S08C-AD-Z8	IRSL2M-04S08C16GP-2D-Z8	IIRSL3M-04X16S08C-AD-Z8	IRSL3LM-04X48GP-2D-Z8
Fixed Ports				
Port Number	16	28	28	52
RJ45 Port	8*1000M Combo(RJ45/SFP)	16*10/100/1000M RJ45 8*1000M Combo(RJ45/SFP)	8*1000M Combo(RJ45/SFP)	48*10/100/1000M RJ45
Fiber Port	8*1G/2.5G SFP	4*1G/2.5G SFP	4*1G/2.5G/10G SFP+, 16*1G/2.5G SFP	4*1G/2.5G/10G SFP+
Performance				
Switching Capacity	160G			336G
Packet Forwarding Rate	95.23Mpps			144Mpps
MAC	16K			
Buffer	12M			
Jumbo Frame	10K Bytes			
Management				
Management	Layer 2: Support WEB/SNMP/VLAN/QoS/RMON/LLDP/IGMP Snpooing/Mirror/QinQ/Link Aggregation/DDM/ACL/SSH/IPv6 Management/DHCP/NTP/FTP/TFTP/Telnet Server/Ping/Tracert Detection/RSTP/MSTP/ERPS Ring Network/802.1X/Radius/Multicast/PoE watchdog/Remote Power Failure Alarm Layer 3 Lite: Support IPV4/V6 Static Routing/Direct Routing/ARP Layer 3: Support Dynamic Routing Protocols such as OSPF, RIP, VRRP, BGP, ISIS, etc.			
Power				
Input Voltage Range	AC100~240V + DC12-58V	Dual DC48-58V	AC100~240V + DC12-58V	Dual DC48-58V
Consumption	< 36W	< 396W(PoE)	< 36W	< 400W (PoE)
PoE Port and Protocol	/	Port 1-16 802.3af/at	/	Port 1-48 802.3af/at
Physical and Environmental				
Dimension (WxDxH)	440*245*44mm			
Net Weight	3.6kg			
Operating Temperature	-40℃～+75℃			

Industrial Bypass and M12 Switch

Bypass & M12 Switches



Model	IDSL3M-04X08GP-AU-Z7	IDSL2M-02S08GP-2BP-Z7	IDSL2M-02S04GHP-Z8LB	IDSM-0008GPM12-Z6
Fixed Ports				
Port Number	12	10	6	8
Copper Port	8*10/100/1000M RJ45	8*10/100/1000M RJ45	4*10/100/1000M RJ45	8*10/100/1000M M12
Fiber Port	4*1G/2.5G/10G SFP+	2*1G/2.5G SFP	2*1G/2.5G SFP	/
Performance				
Switching Capacity	160G	36G		26G
Packet Forwarding Rate	95.23Mpps	26.78Mpps		19.34Mpps
MAC	16K			
Buffer	12M			
Jumbo Frame	10K Bytes			
Management				
Management	Layer 2: WEB/SNMP/VLAN/QoS/RMON/LLDP/IGMP Snpooring/Mirror/QinQ/Link Aggregation/DDM/ACL/SSH/IPv6 Management/DHCP/NTP/FTP/TFTP/Telnet Server/Ping/Tracert Detection/RSTP/MSTP/ERPS Ring Network/802.1X/Radius/Multicast/PoE watchdog/Remote Power Failure Alarm Layer 3: Support Dynamic Routing Protocols such as OSPF, RIP, VRRP, BGP, ISIS, etc.			/
Power				
Input Voltage Range	Dual DC48-58V			
Consumption	<260W (PoE)	<250W(PoE)	<370W(PoE)	<186W (PoE)
PoE Port and Protocol	Port 1-8 802.3af/at	Port 1-8 802.3af/at	Port 1-4 802.3af/at/bt	Port 3-8 802.3af/at
Physical and Environmental				
Dimension (WxDxH)	161*115*53mm	48*104*143mm	108*104*143mm	287*182*65.7mm
Net Weight	0.9kg	0.58kg	1.15kg	1.2kg
Operating Temperature	-40℃～+75℃	-40℃～+85℃	-30℃～+60℃	-40℃～+85℃

Integrated Network

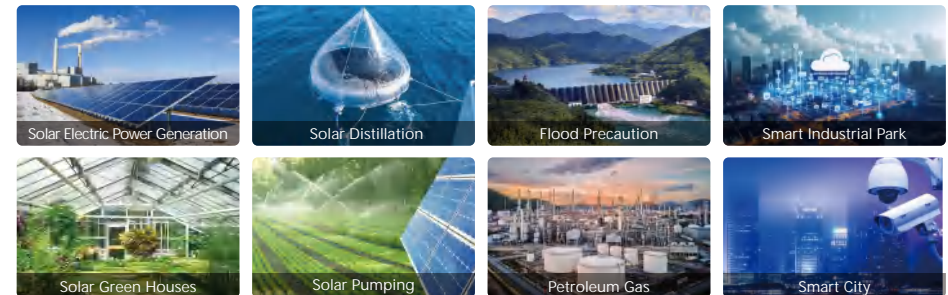


The Solar and Intelligent Cabinets are modular, compact solutions designed for digital new energy low-voltage systems. They seamlessly integrate grid power, solar energy, battery management, network switching, and IoT communication technologies, addressing the growing demand for sustainable, reliable energy solutions. Supporting 4G, 5G, and fiber optic transmission, these cabinets efficiently power both high-power and standard devices in off-grid environments, making them ideal for remote and urban infrastructure. With IP55 protection, surge protection, and a unified management platform for remote monitoring and maintenance, they provide enhanced operational resilience and scalability. By leveraging clean energy and IoT integration, they offer an eco-friendly solution that supports industries in their transition to sustainable, smart infrastructure.

Application



1.7" Industrial-grade Full-color OLED	HIGH LIGHTS	Modular Design for Flexibility and Scalability
Deliver 12/24/48V Voltages for Different PD		Online MPPT Automatic Tracking Charging
Reverse Connection Protection for 36/24/12/9/5V		Multiple Safety Protection against Burnout
Ternary Lithium/LiFePO4/Lead-acid Batteries		RS485 for Platform and Seamless Communication
Main Power/Solar Power		Optional 4G/5G/WIFI/GPS Connectivity



Fault Location	Heavy Dust Fanless IP55	Fast Installation
Solar Energy	Redundant Power AC/DC	Support Lead-acid/LiFePO4/Ternary Lithium Batteries

Outdoor Mini PoE Switch Box

Unmanaged & Managed PoE Switch Boxes



Model	OSBAIM-01S04GP-Z	OSBAIM-02S08GP-Z	OSBL3LR-02S08GP-Z	OSBL3LM-04X08GP-UA-Z
Fixed Ports				
Port Number	5	10	10	12
RJ45 Port	4*10/100/1000M RJ45	8*10/100/1000M RJ45	8*10/100/1000M RJ45	8*10/100/1000M RJ45
Fiber Port	1*1000M SFP	2*1000M SFP	2*1000M SFP	4*1G/2.5G/10G SFP+
Performance				
Switching Capacity	14G	26G	20G	160G
Packet Forwarding Rate	10.416Mpps	19.34Mpps	14.88Mpps	95.23Mpps
MAC	8K	16K	8K	16K
Buffer	1M	2M	4.1M	12M
Jumbo Frame	10K Bytes			
Management				
Management	DIP Switch: 1-PoE Watchdog; 2-Extension 250m; 3-Port Isolation; 4-VIP Power Supply/QoS		Layer 3 Lite: Support WEB/SNMP/VLAN/QoS/RMON/LLDP/ IGMP Snpooing/Mirror/QinQ/Link Aggregation/DDM/ACL/ SSH/IPv6 Management/DHCP/NTP/FTP/TFTP/Telnet Server/ Ping/Tracert Detection/RSTP/MSTP/ERPS Ring Network/ 802.1X/Radius/Multicast/PoE watchdog/IPV4/IPv6 Static Routing/Direct Routing/ARP	Layer 3 Lite: Support WEB/SNMP/VLAN/QoS/RMON/LLDP/ IGMP Snpooing/Mirror/QinQ/Link Aggregation/DDM/ACL/ SSH/IPv6 Management/DHCP/NTP/FTP/TFTP/Telnet Server/ Ping/Tracert Detection/RSTP/MSTP/ERPS Ring Network/ 802.1X/Radius/Multicast/PoE watchdog/Remote Power Failure Alarm/IPv4/IPv6 Static Routing/Direct Routing/ARP
Power				
Input Voltage Range	AC100~240V			
Consumption	<125w (PoE)	<246w (PoE)		<260w (PoE)
PoE Port and Protocol	Port 1-4 802.3af/at	Port 1-8 802.3af/at		
Physical and Environmental				
Dimension (LxWxH)	245*240*34mm			
Net Weight	8kg	8.6kg	9.2kg	9.9kg
Operating Temperature	-20 C ~ +75 C			

Solar & Grid Powered Cabinetes



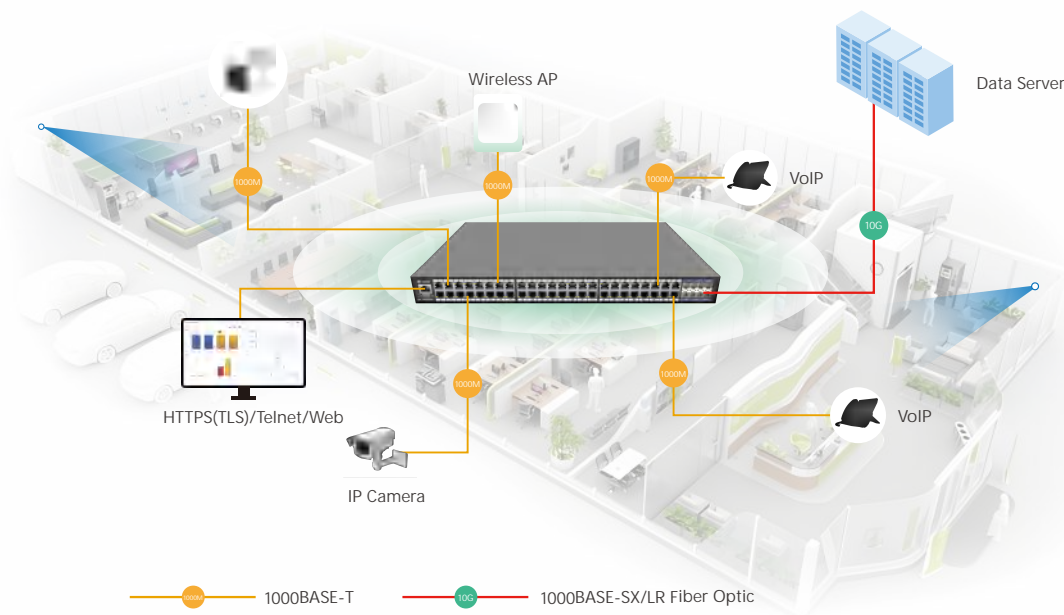
Model	SIBL2M-02S08GP-Z	SPIBL2M-02S08GP-Z	SPBAIR-02S04GHP-J240	SPBR-0008GHP-J240
Switching Network				
Port Number	10	10	6	8
RJ45 Port	8*10/100/1000M RJ45	8*10/100/1000M RJ45	4*10/100/1000M RJ45	8*10/100/1000M RJ45
Fiber Port	2*1000M SFP			/
Box Specification				
Communication Protocol	Integrated multi-protocol access supports transparent transmission, MQTT, TCP/IP, UDP, HTTP, etc.	Serial port transparent transmission, MQTT, TCP/IP, UDP, HTTP, etc.	Standard Modbus RTU	
I/O Module	5CH DI, 5CH DO	4CH DI, 4CH DO	/	
Serial Port	2CH RS232 2CH RS485	3CH RS232/RS485	1CH RS485	
Fan	DC24V Intelligent Thermostat Fan	DC24V Intelligent Thermostat Fan	Thermostat Fan	
Option	4G/WIFI/GPS			
Installation	Pole/Wall Mount			
Management				
Management	Web Management Centralized Management of Network Management Platform (MQTT Protocol)	Web Management Centralized Management of Network Management Platform (MQTT Protocol)	Built-in 0.96-inch OLED screen that shows status, measurements, statistics, and alarms for power generation, charging, and system conditions.	
Power				
Input Voltage Range	2CH DC48V, 1CH AC220V, 1CH AC24V	DC24V	DC12V/DC24V	
Power Ouput	4CH DC12V	1CH AC24V, 1CH DC24V, 4CH DC12V	Input Withstand Voltage: 60V Charging Current: 20A Discharge Power: 10A 240W Option Solar Panel: 36V 240W Daily Power Generation (Sunny Day): 1450wh Daily Power Generation (Rainy Day): 145wh Support Lead Acid/LiFePO4/Ternary Lithium Batteries 12V/24V	
PoE Port and Protocol	Port 1-8 802.3 af/at	Port 1-2 802.3af/at/bt Port 3-4 24V PoE Port 5-8 802.3 af/at	Port 1-2 Auto 24V/48V PoE Port 3-4 802.3af/at/bt	Port1-8 802.3af/at/bt
Box Physical and Environmental				
Dimension (LxWxH)	535*385*230mm	550*380*220mm	486*296*609mm	
Net Weight	18.5kg	23.8kg	18.9kg	
Operating Temperature	-40℃ ~ +70℃		-15℃ ~ +55℃	

Access Network

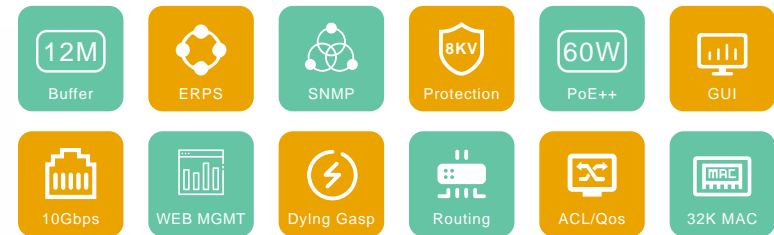


The affordable Access Switches provide reliable, high-performance connectivity for businesses and campuses worldwide, ensuring seamless communication and rapid data transfer. Designed with affordability and scalability in mind, these switches are ideal for small to medium-sized businesses, educational institutions, and large enterprises seeking cost-effective, reliable networking solutions. Equipped with PoE+ to power devices like IP phones, printers, and cameras, and PoE++ for high-speed cameras and Wi-Fi 6/7 access points, they support a wide range of applications across industries. Whether for security, smart office solutions, or IoT deployments, these switches offer flexibility and performance to meet diverse market needs. Easy to set up, they streamline network deployment by powering endpoints over a single Ethernet cable, significantly reducing setup complexity and maintenance costs.

Application



Managed Switch

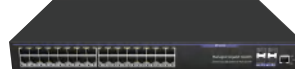


Unmanaged Switch



Managed PoE Switch

Managed Switches



Model	CSL3LM-04X24GP-AC5L	CSL3LM-04S32GP-L	CSL3LR-04C24GP-Z	CSL3R-06X48GP-Z
Fixed Ports				
Port Number	28	36	28	54
Copper Port	24*10/100/1000M RJ45	32*10/100/1000M RJ45	24*10/100/1000M RJ45 4*1000M Combo(RJ45/SFP)	48*10/100/1000M RJ45
Fiber Port	4*1G/2.5G/10G SFP+	4*1G/2.5G SFP	/	6*1G/2.5G/10G SFP+
Performance				
Switching Capacity	128G	84G	56G	216G
Packet Forwarding Rate	190Mpps	125Mpps	41.616Mpps	160.7Mpps
MAC	16K			
Buffer	12M			
Jumbo Frame	10K Bytes			
Management				
Layer 2+ Management	Layer 3 Lite: Support WEB/SNMP/VLAN/QoS/RMON/LLDP/IGMP/Mirror/QinQ/Link Aggregation/DDM/ACL/SSH/IPv6 Management/DHCP/NTP/FTP/TFTP/Telnet Server/Ping/Tracert Detection/RSTP/MSTP/ERPS Ring Network/802.1X/Radius/Multicast/Remote Power Failure Alarm/Static Routing/Direct Routing/ARP		Layer 3 Lite: Support WEB/SNMP/VLAN/QoS/RMON/LLDP/IGMP Snooping/Mirror/QinQ/Link Aggregation/DDM/ACL/SSH/IPv6 Management/DHCP/NTP/FTP/TFTP/Telnet Server/Ping/Tracert Detection/RSTP/MSTP/ERPS Ring Network/802.1X/Radius/Multicast/PoE watchdog/IPv4/IPv6/Static Routing/Direct Routing/ARPLayer 3: Support WEB Dynamic Routing Protocols such as OSPF, RIP, VRRP, etc.	
Power				
Input Voltage Range	AC100~240V			
Consumption	≤248W (PoE)	≤440W (PoE)	≤300W (PoE)	≤400W (PoE)
PoE Port and Protocol	Port 1-24 802.3af/at	Port 1-32 802.3af/at	Port 1-24 802.3af/at	Port 1-48 802.3af/at
Physical and Environmental				
Dimension (LxWxH)	440*180*45mm	440*300*44mm	440*284*44mm	440*270*44mm
Net Weight	2.77kg	4.94kg	3.4kg	4.4kg
Operating Temperature	-10°C~+50°C			

AI PoE Switches



Model	CSAIR-0006GHP-Z	CSAIR-01S09GHP-Z	CSAIR-02S18GHP-Z	CSAIR-02S26GHP-Z
Fixed Ports				
Port Number	6	10	20	28
RJ45 Port	6*10/100/1000M RJ45	9*10/100/1000M RJ45	18*10/100/1000M RJ45	26*10/100/1000M RJ45
Fiber Port	/	1*1000M SFP	2*1000M SFP	2*1000M SFP
DIP Switch				
1	PoE Watchdog			
2	250m Extension			
3	Port Isolation			
4	Storm Control			
Performance				
Switching Capacity	12G	20G	56G	56G
Packet Forwarding Rate	8.9Mpps	14.88Mpps	29.76Mpps	41.66Mpps
MAC	4K	2K	8K	
Buffer	2M		4.1M	
Jumbo Frame	10K Bytes			
Power				
Input Voltage Range	AC100~240V			
Consumption	≤65W(PoE)	≤120W (PoE)	≤300W (PoE)	≤400W (PoE)
PoE Port and Protocol	Port 1-4 802.3 af/at (Port 1 802.3bt)	Port 1-8 802.3 af/at (Port 1 -2 802.3bt)	Port 1-16 802.3 af/at (Port 1 -2 802.3bt)	Port 1-24 802.3 af/at (Port 1 -2 802.3bt)
Physical and Environmental				
Dimension (LxWxH)	202*140*44mm	270*181*44mm	440*280*44mm	
Net Weight	0.7kg	1.1kg	3.5kg	
Operating Temperature	-10°C~+50°C			

Multi-Gigabit Switch

Multi-Gigabit Switches



Model	CSR-02X04MGP-Z	CSWR-01X09MGP-Z	CSL3R-06X24MGP-Z	CSL3R-0008XG-Z
Fixed Ports				
Port Number	6	9	30	8
RJ45 Port	4*10/100/1000/2500M RJ45	8*10/100/1000/2500M RJ45	24*10/100/1000/2500M RJ45	8*1000/2500/5000/10000M RJ45
Fiber Port	2*10G SFP+	1*1G/2.5G/10G SFP+	6*1G/2.5G/10G SFP+	/
Performance				
Switching Capacity	60G		240G	160G
Packet Forwarding Rate	44.64Mpps		178.56Mpps	119.04Mpps
MAC	4K		32K	16K
Buffer	8.1M		16M	12M
Jumbo Frame	16K Bytes	13K Bytes	16K Bytes	10K Bytes
Management				
Management	/	Web Smart	Layer 3: Support WEB/SNMP/VLAN/QoS/RMON/LLDP/IGMP Snpooring/Mirror/QinQ/Link Aggregation/DDM/ACL/SSH/IPv6 Management/DHCP/NTP/FTP/TFTP/Telnet Server/Ping/Tracert Detection/RSTP/MSTP/ERPS Ring Network/802.1X/Radius/Multicast/PoE watchdog/IPv4/IPv6 Static Routing/Direct Routing/ARP/Dynamic Routing Protocols such as OSPF, RIP, VRRP, etc.	
Power				
Input Voltage Range	AC100~240V			
Consumption	≤72W (PoE)	≤135W (PoE)	≤400W (PoE)	≤60W
PoE Port and Protocol	Port 1-4 802.3af/at	Port 1-8 802.3af/at	Port 1-24 802.3af/at	/
Physical and Environmental				
Dimension (LxWxH)	190*140*44mm		440*280*44mm	270*181*44mm
Net Weight	0.75kg	0.73kg	3.8kg	1.32kg
Operating Temperature	-10°C~+50°C			

Battery and Hotswap Switch

Battery & Hotswap Switches



Model	CSL3LM-04X16S08C-UB-L	CSL3LM-04X24G-B-L	CSL3M-04X08C16GP-H2AU-L	CS3LM-04X48S-H2DU-L
Fixed Ports				
Port Number	28	36	28	52
RJ45 Port	8*1000M Combo(RJ45/SFP)	24*10/100/1000M RJ45	16*10/100/1000M RJ45 8*1000M Combo(RJ45/SFP)	/
Fiber Port	4*1G/2.5G/10G SFP+, 16*100/1000M SFP	4*1G/2.5G/10G SFP+	4*1G/2.5G/10G SFP+	4*1G/2.5G/10G SFP+, 48*100/1000M SFP
Performance				
Switching Capacity	128G			352G
Packet Forwarding Rate	190.4Mpps			520Mpps
MAC	16K			
Buffer	12M			
Jumbo Frame	10K Bytes			
Management				
Management	Layer 3 Lite: Support WEB/SNMP/VLAN/QoS/RMON/LLDP/IGMP/Mirror/QinQ/Link Aggregation/DDM/ACL/SSH/IPv6 Management/DHCP/NTP/FTP/TFTP/Telnet Server/Ping/Tracert Detection/RSTP/MSTP/ERPS Ring Network/802.1X/Radius/Multicast/Remote Power Failure Alarm/Static Routing/Direct Routing/ARP Layer 3: Support Dynamic Routing Protocols such as OSPF, RIP, VRRP, BGP, ISIS, etc.			
Power				
Input Voltage Range	AC100~240V Automatically switching to 12V rechargeable battery when the primary power supply 220V fails		Hot-swap 1+1 Redundant PSUs Dual AC100~240V	Hot-swap 1+1 Redundant PSUs Dual DC24/48V
Consumption	≤40W		≤440W(PoE)	≤60W
PoE Port and Protocol	/		Port 1-16 802.3af/at	/
Physical and Environmental				
Dimension (LxWxH)	440*245*44mm			440*300*44mm
Net Weight	4.23kg	3.88kg	4.1kg	6.1kg
Operating Temperature	-10°C~+50°C			

MPPT Solar Switch

MPPT Solar PoE Switches



Model	CSSAIR-02S04GHP-20-J	CSSAIR-0008GHP-20L-J	CSSL3LR-02S08GP-15-S	CSSL3LR-02S08GP-15A-S
Fixed Ports				
Port Number	6	8	10	10
RJ45 Port	4*10/100/1000M RJ45	8*10/100/1000M RJ45	8*10/100/1000M RJ45	8*10/100/1000M RJ45
Fiber Port	4*1000M SFP	/	2*1000M SFP	2*1000M SFP
Performance				
Switching Capacity	56G	20G		
Packet Forwarding Rate	40.32Mpps	15Mpps	14.88Mpps	
MAC	8K	4K	8K	
Buffer	4.1M	2.5M	4.1M	
Jumbo Frame	10K Bytes			
Management				
Management	Built-in 0.96-inch OLED screen that shows status, measurements, statistics, and alarms for power generation, charging, and system conditions. Switch DIP: DIP 1-2 ON: 24V Enable; OFF: 48V Enable DIP 3 ON: PoE Watchdog Enable; OFF: PoE Watchdog Disable DIP 4 ON: Fiber Watchdog Enable; OFF: Fiber Watchdog Disable	Built-in 0.96-inch OLED screen that shows status, measurements, statistics, and alarms for power generation, charging, and system conditions.	Layer 3 Lite: Support WEB/SNMP/VLAN/QoS/RMON/LLDP/IGMP Snpooing/Mirror/QinQ/Link Aggregation/DDM/ACL/SSH/IPv6 Management/DHCP/NTP/FTP/TFTP/Telnet Server/Ping/Tracert Detection/RSTP/MSTP/ERPS Ring Network/802.1X/Radius/Multicast/PoE watchdog/IPv4/IPv6 Static Routing/Direct Routing/ARP	
Power				
Input Voltage Range	Input Withstand Voltage: 60V Charging Current: 20A Discharge Power: 10A 240W 36V Solar Panel Charging 24V Battery: 18V Solar Panel Charging 12V Battery Daily Power Generation (Sunny Day): 1450wh Daily Power Generation (Rainy Day): 145wh Support Lead Acid/LiFePO4/Ternary Lithium Batteries 12V/24V		12V/24V Solar Panel + 12V/24V battery, Max. 1200W; AC90~265V, Max. 300W Battery Max. Charging Current 18A	
Consumption	12V Battery: ≤120W (PoE) 24V Battery: ≤240W (PoE)		≤120W (PoE)	
PoE Port and Protocol	Port 1-2 Auto 24V/48V PoE Port 3-4 802.3af/at/bt	Port1-8 802.3af/at/bt	Port 1 802.3af/at/bt Port 2-8 802.3af/at	Port 1-8 Auto 24/48V PoE
Physical and Environmental				
Dimension (LxWxH)	209*166*53mm		330*190*45mm	
Net Weight	1kg		3.4kg	
Operating Temperature	-40°C~+55°C		-20°C~+65°C	

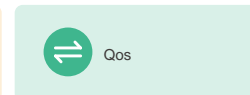
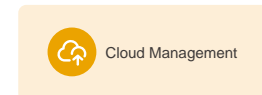
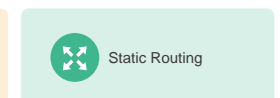
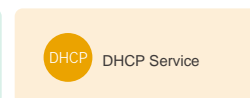
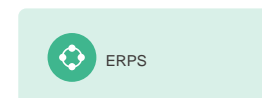
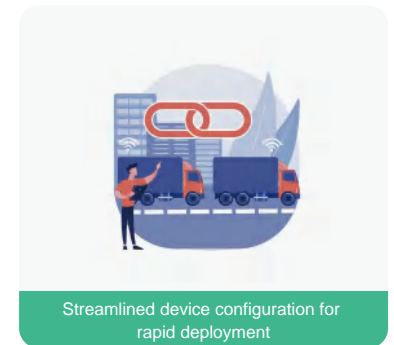
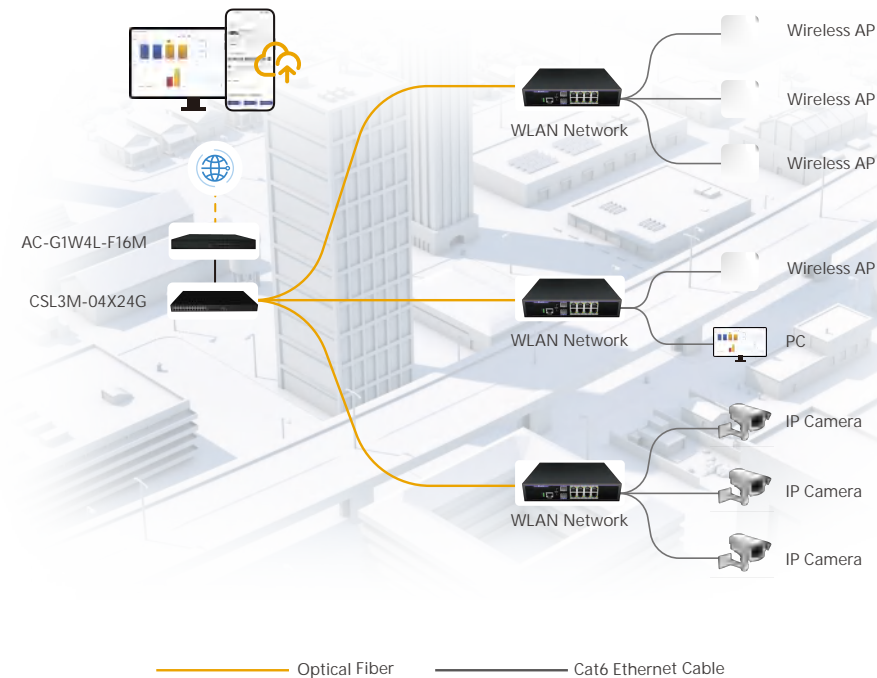
Category	Model	Picture	Features	Operating Environment
PoE Injector	PI-01MGP30-Y		<ul style="list-style-type: none"> ① Single Port 10/100/1000M/2.5G PoE Injector ② IEEE802.3af/at Standard, Max. 30 Watts ③ PoE Pin: 1, 2+/3, 6- ④ Input Voltage: AC100~240V ⑤ PoE data & power transmission distance 100m ⑥ Net Weight: 200g ⑦ Compact Size: 121*50*36mm 	0°C~+50°C
PoE Injector	PI-01GHP90-D		<ul style="list-style-type: none"> ① Single Port 10/100/1000M PoE Injector ② IEEE802.3af/at/bt Standard, Max. 90 Watts ③ PoE :1, 2+/3, 6- 4, 5+/7, 8- ④ Input Voltage: AC100~240V ⑤ PoE data & power transmission distance 100m ⑥ Net Weight: 400g ⑦ Size: 144*57*40mm 	0°C~+50°C
Industrial PoE Injector	IPI-01XGHP90-Y		<ul style="list-style-type: none"> ① Industrial Single Port 10/100/1000M/2.5G/5G/10G PoE Injector ② IEEE802.3af/at/bt Standard, Max. 90 Watts ③ Input Voltage: DC12-48V ④ PoE data & power transmission distance 100m ⑤ Net Weight: 250g ⑥ Size: 95*70*30mm 	-40°C~+80°C
Outdoor PoE Extender	OPE-11GP30-X		<ul style="list-style-type: none"> IP66 Outdoor Gigabit PoE Extender 30W 2 RJ45 ports(1 in 1 out) Support IEEE802.3af/at, max. output 22W 	-25°C~+55°C
Outdoor PoE Extender	OPE-11GHP90-S		<ul style="list-style-type: none"> IP67 Outdoor Gigabit PoE Extender 2 RJ45 ports(1GE 90W in 1GE 90W +1GE 30W out) (1000/100M Speed: Max. 150meters;10M Speed: Max. 250meters) Support IEEE802.3af/at/bt, max. output 90W 	-40°C~+80°C
PoE Splitter	PS-01GP15-D		<ul style="list-style-type: none"> ① Gigabit PoE Splitter ② DC Jack: 5.5*2.1mm (Optional: DC Jack: 5.5*2.5mm/Type-C/Micro-USB) ③ IEEE802.3af Standard ④ PoE In: 37-57V(15.4W); DC Out:12V/1A (12.95W) ⑤ Mode A or Mode B ISO:1.5KV ⑥ Size: 81*28*24mm ⑦ Total power:13W 	0°C~+50°C
Outdoor PoE Splitter	OPS-01MGHP90-S		<ul style="list-style-type: none"> ① Outdoor IP67 Waterproof PoE Splitter ② PoE in: 1x10M/100M/1G/2.5G, Max. 90W ③ Output: DC12V Max.7.5A, Max. 90W ④ Net Weight: 310g ⑤ Size: 150*77*43mm 	-40°C~+80°C

Smart Cloud Network



The Smart Cloud (S-Cloud) is an open, scalable Network Management Platform, designed to meet the demands of growing and dynamic infrastructures. It offers flexible deployments and powerful features that drive operational efficiency, helping organizations streamline project management. Whether for small enterprises or large-scale networks, the platform ensures ease of use, reliability, and scalability. The seamless setup, multi-vendor device integration, and simplified configuration, making it an ideal solution for diverse network environments. Real-time fault alerts and automatic network topology generation provide proactive management, minimizing downtime and optimizing performance. Users can effortlessly create and manage unlimited projects, track network health with detailed reports, and ensure smooth operations across various applications, from data centers to branch offices.

Application



Smart Cloud Managed Switch

Smart Cloud
Managed Switches



Model	CSCL3LR-02S08GP-Z	CSCL3LR-04C16GP-Z	CSCL3R-04X24GP-Z	CSCL3R-06X48GP-Z
Fixed Ports				
Port Number	10	20	28	54
Copper Port	8*10/100/1000M RJ45	16*10/100/1000M RJ45 4*1000M Combo(RJ45/SFP)	24*10/100/1000M RJ45	48*10/100/1000M RJ45
Fiber Port	2*1000M SFP	/	4*1G/2.5G/10G SFP+	6*1G/2.5G/10G SFP+
Performance				
Switching Capacity	20G	56G	128G	216G
Packet Forwarding Rate	14.88Mpps	29.76Mpps	95.23Mpps	160.7Mpps
MAC	8K		16K	32K
Buffer	4.1M		12M	16M
Jumbo Frame	10K Bytes			
Management				
Management	Layer 3 Lite: Support WEB/SNMP/VLAN/QoS/RMON/LLDP/IGMP Snooping/Mirror/QinQ/Link Aggregation/DDM/ACL/SSH/IPv6 Management/DHCP/NTP/FTP/TFTP/Telnet Server/Ping/Tracert Detection/RSTP/MSTP/ERPS Ring Network/802.1X/Radius/Multicast/PoE watchdog/IPv4/IPv6 Static Routing/Direct Routing/ARP MQTT Cloud Management			
Power				
Input Voltage Range	AC100~240V			
Consumption	≤120W (PoE)	≤300W (PoE)		≤400W (PoE)
PoE Port and Protocol	Port 1-8 802.3af/at	Port 1-16 802.3af/at	Port 1-24 802.3af/at	Port 1-48 802.3af/at
Physical and Environmental				
Dimension (LxWxH)	220*161*44mm	440*280*44mm		440*284*44mm
Net Weight	0.97kg	3.4kg	3kg	4kg
Operating Temperature	-10°C~+50°C			

CONTACT US

Lanao Communication Technology Limited

📍 Factory: #A5, Silicon Valley Industrial Park, Longhua, Shenzhen, 518110, P.R.C.

Sales Branch: 2106B, #3D, Cloud Park Phase 1, Bantian, Longgang, Shenzhen, 518129, P.R.C.

@2025 Lanao Communication All Rights Reserved



☎ +86-755-84656994

✉ info@lanaotek.com

🌐 www.lanaotek.com