

# OSBAIM-01S04GP-Z

IP55 Outdoor Box, with Unmanaged Industrial Switch

1x1000 Base-X, 4x10/100/1000 Base-T PoE



## Overview

OSBAIM-01S04GP-Z Outdoor PoE Switch Box embedded with 1x1000Base-X, 4x10/100/1000 Base-T Unmanaged Industrial PoE Switch, it is miniature size with IP55 high protection level. The box provides excellent industrial quality with high/low temperature resistance and lightning protection, which enhances the reliability and safety of networks.

It can meet the deployment requirements of rail transit, safe city, intelligent transportation, video surveillance and other applications.

## Features

- Integrated Unmanaged Industrial PoE Switch, 1x1000Base-X, 4x10/100/1000Base-T
- Shell: IP55 Waterproof Case
- Cooling: Auto Fans Cooling

- Working Temp: -40°C~+75°C
- Box Internal Power: 150w (for PoE Switch)
- Optical Fiber Tray
- Surge Protector
- Air Breaker

## Specifications

Cabinet	
Material	High-quality galvanized sheet, thickness 1.2mm Box mounting ears thickness 1.5mm
Weight	Net weight: 8KG, Gross weight: 9KG
Lock	Triangle lock
Door	The door has built-in waterproof rubber strips and built-in reinforcing ribs
Bottom Part	The diameter of the cable entry hole at the bottom of the box is 50mm, and there is air inlet hole at bottom of the box (Insert-proof net welded inside)
Fan	AC 220V with temperature control, $3000 \pm 10\%$ RFM, air volume 90CFM, 92*92*25mm, line length 300mm
Optical Fiber	4-port SC fiber flange, with 8-core fiber box
Air Breaker	It has short-circuited protection, overload protection and isolation function and has thermal-magnetic tripping characteristics C-shaped curve(5In-10In)
Installation	Pole / Wall installation
Switch	
Fixed Port	1x1000 Base-X, 4x10/100/1000 Base-T
LED Indicators	PWR, OPT, NMC, ALM
Power Interface	AC Input
DIP Switch	
1	LFP/ Remote PD Reset
2	LEGACY (Standard & Non-standard PoE)
3	Port Isolation
4	Storm Control Configuration

### Cable Type & Transmission Distance

Twisted-Pair	0-100m(CAT5e,CAT6 )
Single-Mode Optical Fiber	20/40/60/80/100KM
Multimode Optical Fiber	550m
<b>Network Topology</b>	
Star Topology	Support
Bus Topology	Support
Tree Topology	Support
Hybrid Topology	Support
<b>Electrical Specifications</b>	
Input Voltage	AC100~240V, 50/60Hz
Total Power Consumption	< 125w (with PoE)
Voltage Alarm	Support
<b>PoE Support</b>	
PoE Ports	1-4 Ports
Pin Assignment	1, 2, 3, 6
PoE Standard	802.3af, 802.3at (15w/30w)
<b>Layer 2 Switching</b>	
Switching Capacity	14G
Packet Forwarding Rate	10.416Mpps
MAC Address Table	8K
Buffer	1M
Forwarding Delay	<5us
MDX/MIDX	Support
Jumbo Frame	Support 10KBytes
Watchdog	Support
Port Isolation	Support
<b>Environment</b>	
Operating Temperature	-40°C~+75°C
Storage Temperature	-40°C~+85°C
Relative Humidity	5%~95% non-condensing
Thermal Methods	Auto Fans Cooling

MTBF	100,000 hours
------	---------------

**Mechanical Dimensions**

Product Size (D x W x H)	245x240x340mm
--------------------------	---------------

Installation Method	Wall / Pole Mounting
---------------------	----------------------

**EMC & Ingress Protection**

IP Level	IP55
----------	------

Surge Protection of Power	IEC 61000-4-5 Level X (8KV/6KV)
---------------------------	---------------------------------

Surge Protection of ETH Port	IEC 61000-4-5 Level X (8KV/6KV)
------------------------------	---------------------------------

RS	IEC 61000-4-3 Level 3 (10V/m)
----	-------------------------------

EFI	IEC 61000-4-4 Level 3 (1V/2V)
-----	-------------------------------

CS	IEC 61000-4-6 Level 3 (10V/m)
----	-------------------------------

PFMF	IEC 61000-4-8 Level 4 (30A/m)
------	-------------------------------

DIP	IEC 61000-4-11 Level 3 (10V)
-----	------------------------------

ESD	IEC 61000-4-2 Level 4 (8K/15K)
-----	--------------------------------

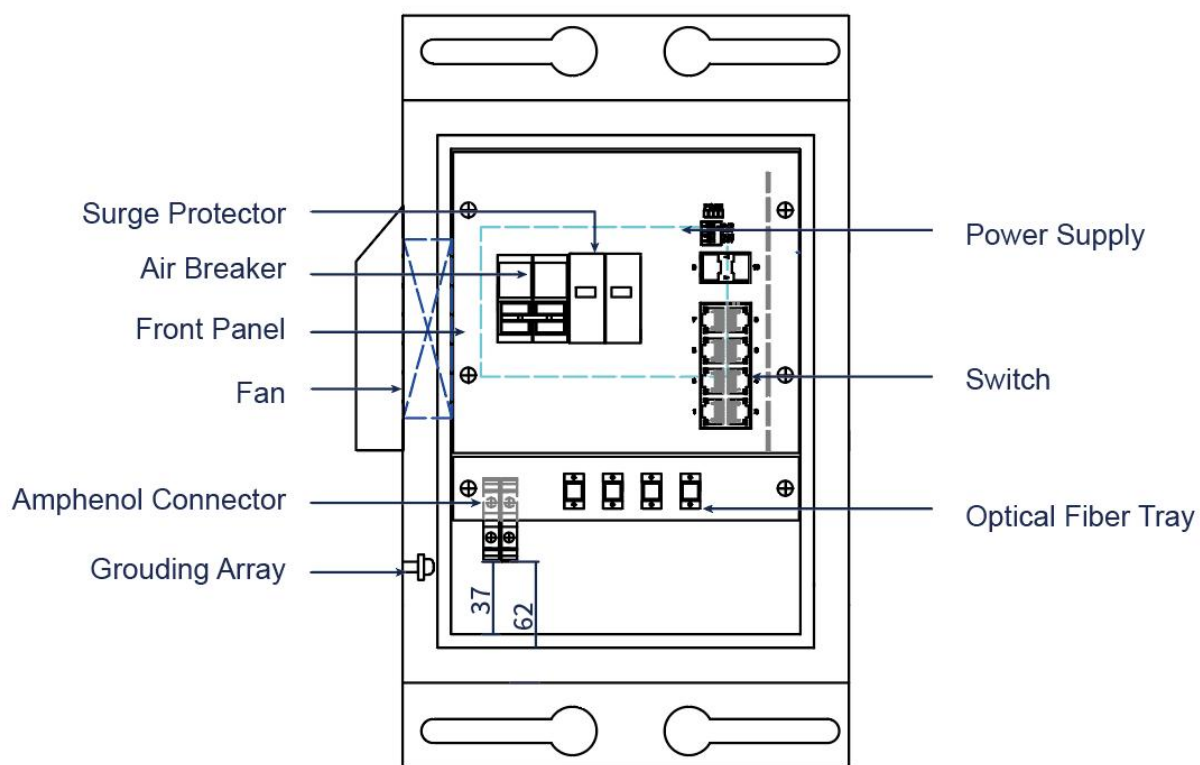
**Power Supply**

Power Supply	DC52V, 2.88A/150W
--------------	-------------------

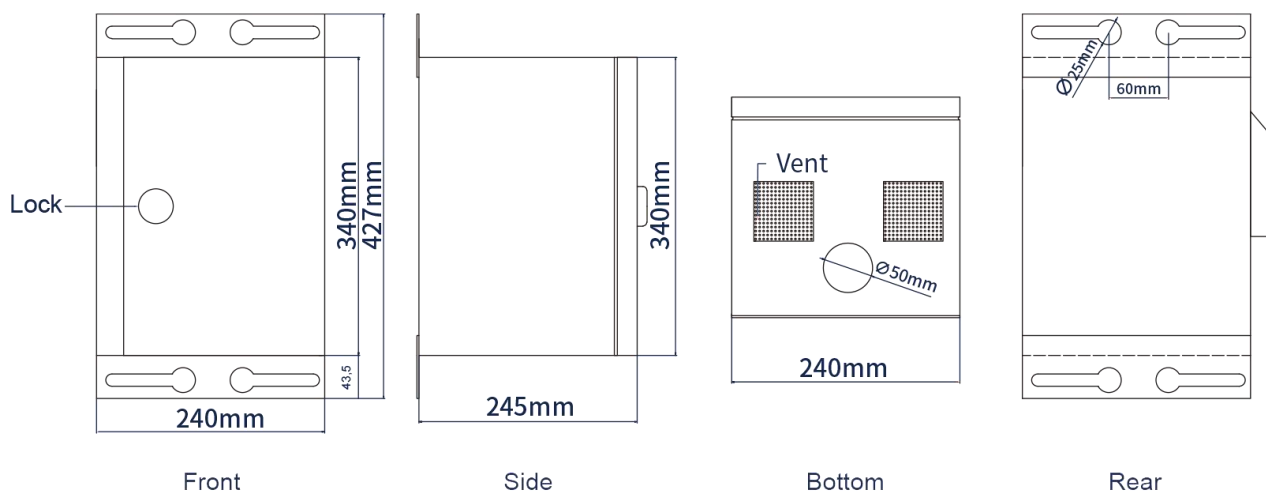
**Certification**

Certificates	CE, FCC, RoHS
--------------	---------------

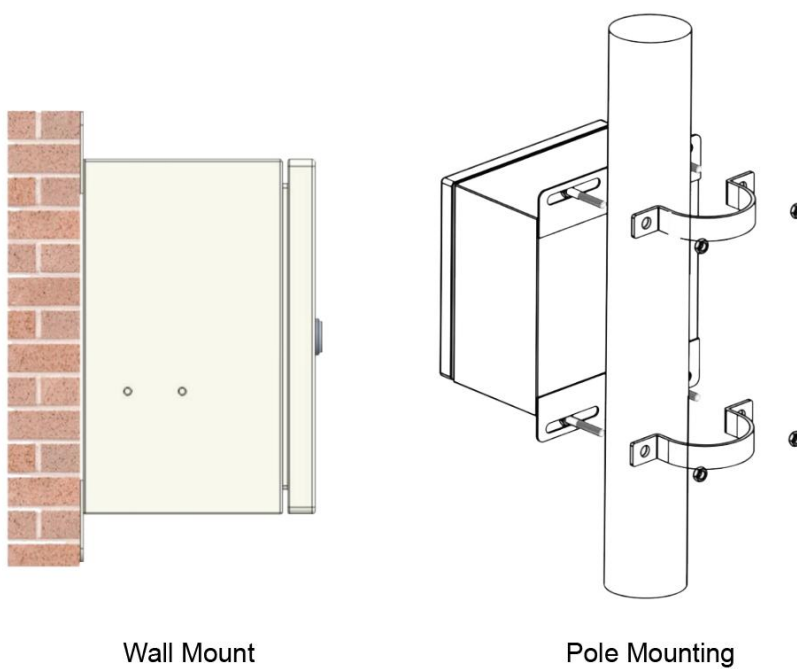
## Structure



Front



## Installation



## Ordering Information

PART NO	DESCRIPTION
OSBAIM-01S04GP-Z	IP55 Outdoor Box, with 1x1000Base-X, 4x10/100/1000Base-T Unmanaged PoE Switch



<https://www.lanaotek.com>



Specifications & design are subject to change without prior notice.

For more details, please email to [info@lanaotek.com](mailto:info@lanaotek.com). Copyright©2024 lanaotek.com All Rights Reserved.