

IDSL3LR-02S04GHPE-S

Industrial Din-rail Switch Layer 3 Lite Managed (Realtek)

4x10/100/1000M RJ45 (Port1-2 24/48V PoE, Port 3-4 PoE++ BT90w), 2x1000M SFP,

Support Environment Detection



Overview

IDSL3LR-02S04GHPE-S is a fully managed industrial Gigabit PoE switch, featuring 4x10/100/1000M PoE ports and 2x1000M SFP ports. As a PoE power-sourcing device, it can automatically detect and supply power to connected devices like wireless APs, IP cameras, IP phones, and industrial sensors over the network cable, making it ideal for high-density PoE network environments. It is widely applicable in intelligent transportation, rail systems, power utilities, mining, metallurgy, and green energy projects. Constructed with an aluminum alloy housing to enhance heat dissipation, it meets IP40 protection standards, ensuring stable performance in challenging environments. The switch supports a range of application service configurations, including Web, CLI, and SNMP network management, PoE power management, port flow control, VLAN configuration, and STP/RSTP protocols, to meet diverse networking needs.

Features

- Built-in 4x10/100/1000M RJ45 (Port1-2 24/48V PoE, Port 3-4 PoE++ BT90w), 2x1000M SFP
- Power input: DC12-57V(non-PoE), DC37-57V(PoE)

- Support Environment Detection
- One-click for Quick formation of ring network

Specifications

Downlink Port	4x10/100/1000M RJ45 Port 1-2 support 24V/48V PoE (Single port Max. 30W) Port 3-4 support BT PoE (Single port Max. 90W)
Uplink Port	2x1000M SFP
Console Port	1
Reset Key	1
Power Input	2 groups of independent power input SW: DC12-57V PoE: DC37-57V
Environment Detection	1-CH input detection of environment temperature and humidity
Function Interface	One-click for quick formation of ring network 2-CH independent power input, having under- and over-voltage protection 1-CH wide voltage alarm input at a range of DC5-57V 1-CH alarm output and relay output, can define various custom condition trigger 1 group of environmental temperature and humidity detection, can make real-time monitoring of the environment Real-time system of crucial voltage monitoring and alarm output function Real-time system temperature, environment temperature, humidity and alarm output function Real-time detection and display of input voltage, current, power Multiple custom port control and intelligent management
Network Protocol	IEEE 802.3x IEEE 802.3; IEEE 802.3u; IEEE 802.3ab; IEEE 802.3z IEEE 802.3ad IEEE 802.3q; IEEE 802.3q/p IEEE 802.1w; IEEE 802.1d; IEEE 802.1s IEEE 802.3z 1000BASE-X STP (Spanning Tree Protocol) RSTP/MSTP (Rapid Spanning Tree Protocol) EPPS ring network protocol EAPS ring network protocol 802.3af/at/bt AUTO 24V/48V PSE

Port Specification	1-4 port 10/100/1000BaseT(X) auto detection, AUTO-DIM/DIM-X
Transmission Mode	Store and Forward (full wire speed)
Bandwidth	56Gbps
Packet Forwarding	14.44Mpps
MAC	8K
Buffer	4.1M
Transmission Distance	10BASE-T: Cat3, 4, 5 UTP (≤ 250 meter) 100BASE-TX: Cat5 or later UTP (≤ 100 meter) 1000BASE-TX: Cat6 or later UTP (≤ 1000 meter) 1000BASE-SX: 62.5 μ m/50 μ m MMF(2m~550m) 1000BASE-LX: 62.5 μ m/50 μ m MM(2m~550m) or 10 μ m SMF(2m~5000m) BIDI supported
Flash	16M
RAM	128M
LED Indicator	5-6: SFP LED PoE Port 1-2: Green=48V; Orange=24V; Link Green=LINK LED Port 3-4: Green=LINK LED; Orange=PoE LED PWR: Power/system LED P1: Master power LED P2: Slave power LED HW: Ring network ON LED
Power Consumption	Standby ≤ 5 W; Network Full-load ≤ 10 W; Full load ≤ 250 W
Operating Temperature	-40~+80°C
Operating Humidity	10%~90% RH Non-condensing
Storage Temperature	-40~+85°C
Storage Humidity	5%~95% RH Non-condensing
Lightning Protection Level	6KV 8/20us; 8KV ESD; IP40
Product Size (L x W x H)	157x115x40mm
Package Size (L x W x H)	310x210x60mm
N.W.	0.82kg
G.W.	1.1kg
Installation	DIN-rail
Certificates	CE, FCC, RoHS
Warranty	2 years

Software Functions

Monitoring Platform	One-click for Quick formation of ring network System temperature monitoring and alarm External temperature and humidity monitoring and alarm Input power monitoring and alarm System each channel key voltage monitoring and alarm System total current, total power monitoring and alarm All-Port network monitoring and alarm Support one group input and output signal monitoring and alarm
Network Protocol	IEEE 802.3x IEEE 802.3; IEEE 802.3u; IEEE 802.3ab; IEEE 802.3z IEEE 802.3ad IEEE 802.3q; IEEE 802.3q/p IEEE 802.1w; IEEE 802.1d; IEEE 802.1S; IEEE 802.1X
MAC	Support 16K MAC address, auto aging and learning
VLAN Configuration	Support port-based VLAN Up to 4096 VLAN Support Voice VLAN, can configure Qom for voice data 802.1Q
Spanning Tree	STP (Spanning tree protocol) RSTP/MSTP (Rapid spanning tree protocol) EPPS/EAPS (Ring network protocol) 802.1x
Port Aggregation	Support 8 groups of aggregation, each group support up to 8 ports;
Port Mirroring	Support many-to-one port mirroring
Loop Guard	Support loop protection, real-time detection, quick alarm, concise location, Intelligent blocking, automatic recovery
Port Isolation	Support downlink ports isolate from each other and communicate with uplink port as well
Flow Control	Half duplex based on Back pressure; Full duplex based on PAUSE frame
Speed Limitation	Bandwidth management based on port input and output
Multicast Control	IGMPv1/2/3 and MLDv1/2 Snooping GMRP protocol registration Multicast address management, multicast VLAN, multicast routing port, static multicast address
DHCP	DHCP Snooping

Storm Suppression	Support unknown multicast, multicast, unknown multicast, broadcast type storm suppression Storm suppression based on bandwidth adjustment and storm filtering
-------------------	------------------------------------------------------------------------------------------------------------------------------------------------------------------

Security	Support User port + IP address ACL based on IP, MAC Support security properties of number of MAC address based on port
----------	------------------------------------------------------------------------------------------------------------------------------

QoS	802.1p port queue priority algorithm Cos/Tos, QOS remark WRR (Weighted Round Robin), weighted priority rotation algorithm WRR; SP; WFQ priority scheduling modes
-----	---------------------------------------------------------------------------------------------------------------------------------------------------------------------------

Cable Sequence	Auto-da-fe; auto detection on straight-through and cross-over cable
----------------	---------------------------------------------------------------------

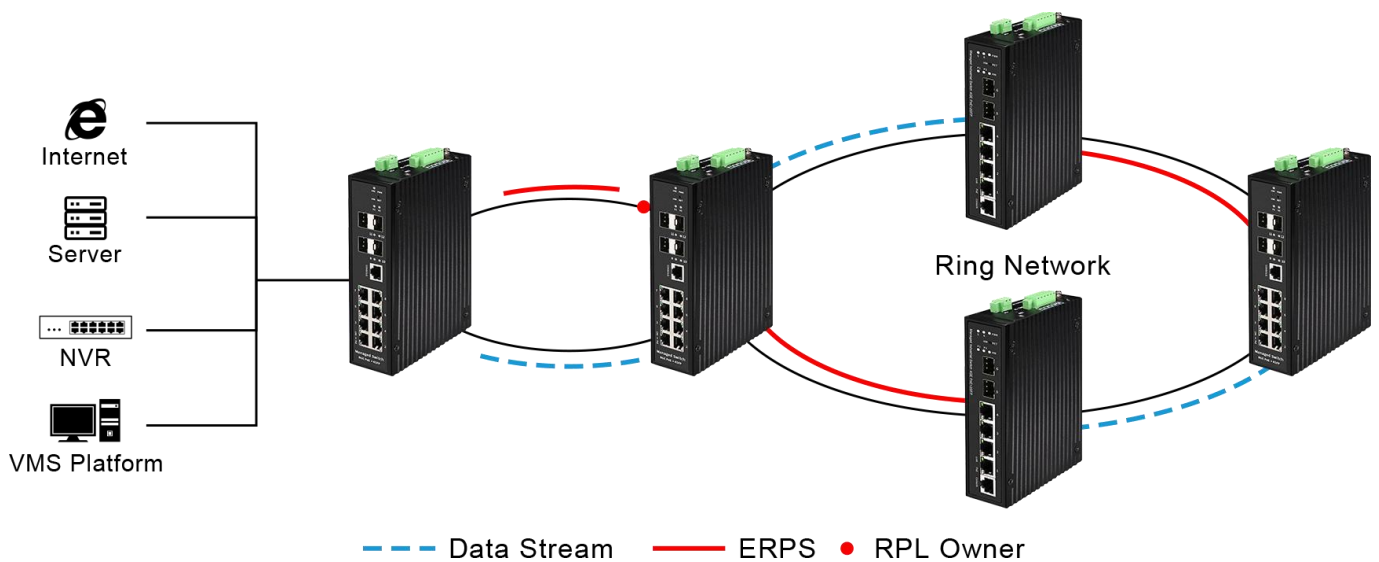
Negotiation Mode	Port support auto negotiation function (self-negotiation transmission rate and duplex mode)
------------------	---------------------------------------------------------------------------------------------

System Maintenance	Upgrade package upload System log viewing WEB recovery factory configuration
--------------------	------------------------------------------------------------------------------------

PoE Function	Port switch Schedule arrangement, timing switch Voltage, current, power display System total power display and configuration PoE dog: support auto reset, timing reset and IP binding reset when device failed Port power configuration (AF.AT Hi-PoE.BT) Indication of over power Port PoE type configuration (48V/24V power supplying)
--------------	---------------------------------------------------------------------------------------------------------------------------------------------------------------------------------------------------------------------------------------------------------------------------------------------------------------------------------------------------------------

Network Management	WEB interface management CLI management based on Telnet, TFTP, Console SNMP V1/V2/V3 management RMONV1/V2 management RMON management
--------------------	--------------------------------------------------------------------------------------------------------------------------------------------------

Application



Ordering Information

PART NO	DESCRIPTION
IDSL3LR-02S04GHPE-S	Industrial Din-rail Switch Layer 3 Lite Managed (Realtek) 4x10/100/1000M RJ45 (Port1-2 24/48V PoE, Port 3-4 PoE++ BT90w), 2x1000M SFP Support Environment Detection



<https://www.lanaotek.com>



Specifications & design are subject to change without prior notice.

For more details, please email to info@lanaotek.com. Copyright©2025 lanaotek.com All Rights Reserved