

Tailored Optical & Ethernet Transmission Solutions

*Enabling Seamless Connectivity in
Data Centers, Industrial Networks, and SMEs*

· **PRODUCT BROCHURE** ·



+86-755-84656994

info@lanaotek.com

www.lanaotek.com



COMPANY PROFILE

Lanbras Communication Technology Limited, established in 2013, has been steadfastly dedicated to designing, developing, and manufacturing cutting-edge Optical and Ethernet Transmission products. Our goal is to foster a more interconnected world through efficient, sustainable, and transformative communication technologies.

We offer a diverse product portfolio across sectors such as Industrial Networking, Telecommunication, Data Centers, Enterprise Networks, IoT, Safe City, Infrastructure Development and Broadband Services. We collaborate globally with Enterprises, Carriers, Integrators, Telecom Operators, ISPs, as well as reputable Distributors. Our solutions foster cost optimization, enhanced scalability, service innovation, and eco-friendly practices to meet market demands. With certifications such as cETL, CE, FCC, RoHS, REACH, UKCA, NOM, EAC, KC, BIS etc., we are committed to quality and compliance. Let's unite under 'Pioneering Connectivity, Empowering Progress'.



CONTENTS

Data Center Network



PART

1

Enterprise Network



PART

2

Access Network



PART

3

Industrial Network



PART

4

Smart Cloud Platform



PART

5

Integrated Network

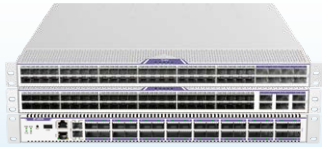


PART

6

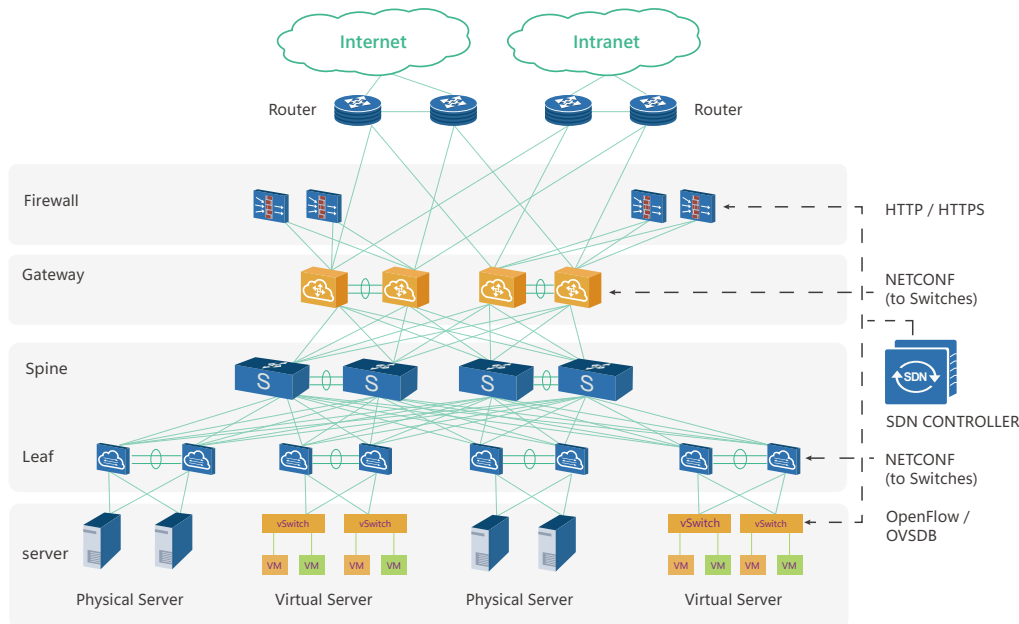
CONTENTS

DATA CENTER NETWORK

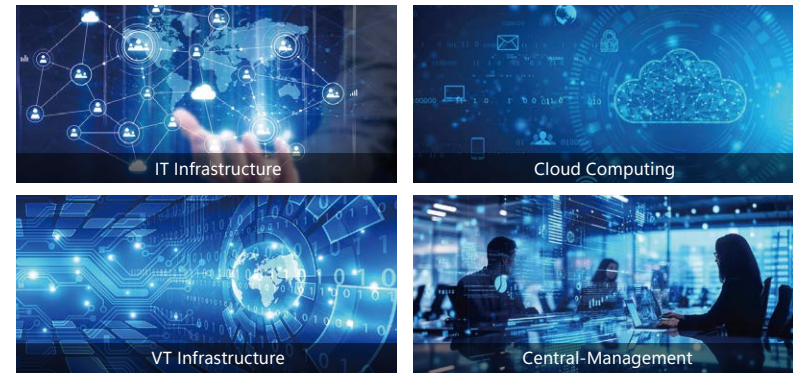


Our Data Center Switches are high-performance, scalable networking platforms built for AI, 5G, cloud computing, and next-generation data center environments. Supporting Leaf-Spine and Top-of-Rack (ToR) architectures, they deliver port speeds from 10GbE to 800GbE with high port density, ultra-low latency, and energy-efficient performance for full rack connectivity. Based on Marvell, Broadcom, and Centec chipsets, we offer both open white-box platforms with ONIE support for flexible NOS deployment (such as SONiC or OcNOS), as well as fully integrated black-box solutions with pre-installed software for fast, stable, and simplified deployment. With powerful switching capacity, reliable security, and future-ready scalability, our data center switches provide the performance and architectural flexibility required for today's data-driven industries.

Application



Data Center Network Architecture



SONiC Open Networking in the Cloud

| | |
|-----------------------------------|---|
| Apps / Protocols | OSPF, BGP, VRF, VxLAN/EVPN, Telemetry, MLAG, MPLS, etc. |
| SONiC Services | SWSS, Syncd |
| SONiC + SAI | ASIC Abstraction |
| Switch Abstraction Interface(SAI) | ✓ Open platform based on Lanbras hardware + Open-source SONiC |

Data Center Switch Marvell Series

Data Center Switch Marvell Series



| Model | DCSL3M-04C16X-PTP | DCSL3M-06C24X | DCSL3M-08C48K | DCSL3M-32C02X | DCSL3M-32E02X |
|-----------------------|--|---|---|---|--|
| Fixed Ports | 16*10G SFP+, 4*100G QSFP28 | 24*10G SFP+, 6*100G QSFP28 | 48*25G SFP28, 8*100G QSFP28 | 32*100G QSFP28, 2*10G SFP+ | 32*400G QSFP56-DD, 2*10G SFP+ |
| Port Number | 20 | 30 | 56 | 34 | 34 |
| Main Chip | Aldrin2 98DX8548, Renesas 8A34002E | Aldrin2 98DX8548 | Falcon 98CX8514 | Falcon 98CX8522 | Falcon 98CX8580 |
| CPU | Marvell Octeon TX2 CN9130 | | Intel Broadwell-DE D1508 | | |
| Memory | 8GB DDR4 | | | | |
| Storage | SSD: 64GB eMMC, optional M.2 STAT slot | | | | |
| Power Supply Units | 2 *AC110~240V, 350W 1+1 Hot-swappable | 2*AC110~240V, 350W 1+1 Hot-swappable | 2*AC110~240V, 550W 1+1 Hot-swappable | 2*AC110~240V, 800W 1+1 Hot-swappable | 2*AC110~240V, 1600W 1+1 Hot-swappable |
| Fan Unit | 5 (4+1 redundant) hot-swappable cooling fans | | | | |
| Operating Altitude | 3000m max | | | | |
| MTBF | 40 Years | | | | |
| MTTR | 1 Hour | | | | |
| Switching Capacity | 2.18Tbps | 2.18Tbps | 4.0Tbps | 6.4Tbps | 25.6Tbps |
| Forwarding Rate | 0.6Gpps | 0.6Gpps | 2.8Gpps | 2.8Gpps | 56Gpps |
| Buffer | 6M | 6M | 24M | 24M | 48M |
| Transmit Descriptors | 32K | 32K | 192K | 192K | 384K |
| Relative Humidity | 5%-95% (non-condensing) | | | | |
| Power Consumption | ≤250W | ≤250W | ≤520W | ≤520W | ≤1200W |
| Dimension (LxWxH) | 445*469*44mm | 445*469*44mm | 445*469*44mm | 445*540*44mm | 445*540*44mm |
| Net Weight | 9.0kg | 9.3kg | 9.6kg | 11.0kg | 13.0kg |
| Operating Temperature | 0°C ~ 45°C | | | | |

Data Center Switch Broadcom Series

Data Center Switch Broadcom Series



| Model | DCSL3B-08C48X-J | DCSL3B-08C48K-J | DCSL3B-32C-J | DCSL3B-MC64E-J | DCSL3B-64Z02X-J |
|-----------------------|---|---|---|-------------------------|--------------------------------------|
| Positioning | 10G ToR / Leaf | 25G ToR / Leaf | 100G Leaf / Spine | Core / Spine | AI / Ultra-High-Speed Core |
| Fixed Ports | 48*1/10G SFP+ 8*40/100G QSFP28 | 48*10/25G SFP28 8*40/100G QSFP28 | 32*100G QSFP28 | 64*100/200/400G QSFP-DD | 64*200/400/800G OSFP 2*1/10G SFP+ |
| Switching Capacity | 4.8Tbps | 4.0Tbps | 6.4Tbps | 51.2Tbps | 51.2Tbps |
| Forwarding Rate | 2,000Mpps | 2,000Mpps | 2,030Mpps | 10,300Mpps | 21,000Mpps |
| Form Factor | 1U | 1U | 1U | 4U | 2U |
| Dimensions (W×D×H) | 442*387*44mm | 442*387*44mm | 442*560*44mm | 442*760*175mm | 440*760*86.1mm |
| Net Weight | 5.6kg | 5.6kg | 8.4kg | 32.8kg | 26kg |
| Max Power Consumption | 300W | 300W | 450W | 2,400W | 2,982W |
| Power Modules | 2 | 2 | 2 | 4 | 2 |
| Fan Modules | 4 | 4 | 5 | 8 | 4 |
| Airflow | Front-to-Rear | Front-to-Rear / Rear-to-Front | Front-to-Rear | | |
| Operating Temperature | 0°C ~ 45°C | | | | |
| Operating Altitude | ≤ 5,000 m | | | | ≤ 3,000 m |
| Software Features | Layer 2 / Layer 3 STP / RSTP / MSTP, LACP, QinQ OSPF, BGP, IS-IS, RIP Full IPv4 / IPv6 dual-stack Data Center Features VxLAN & EVPN M-LAG ECMP / WCMP RDMA / RoCEv2 (model-dependent) | High Reliability GR, BFD Redundant power supplies and fans Hot-swappable modules Management & Automation SNMP v1/v2c/v3 Telemetry, sFlow, IPFIX NETCONF, Python, ZTP | Security IPv4 / IPv6 ACL DDoS protection RADIUS / TACACS+ QoS & Buffering Advanced queue scheduling (SP / WRR / DRR / WFQ) WRED and microburst detection Large buffer architecture | | |

Data Center Switch Centec Series

Data Center Switch Centec Series



| Model | DCSL3C-02C24X-5S | DCSL3C-04C24K-6S | DCSL3C-08C48K-6S | DCSL3C-08C16Q-6S | DCSL3C-32C02X-6S |
|---------------------------|---|-------------------------------|--|-----------------------------|------------------|
| Positioning | Access / ToR | Access / ToR | Leaf | Leaf | Leaf / Spine |
| Fixed Ports | 24*10G SFP+, 2*100G QSFP28 | 24*25G SFP28, 4*100G QSFP28 | 48*25G SFP28, 8*100G QSFP28 | 16*40G QSFP+, 8*100G QSFP28 | 32*100G QSFP28 |
| Switching Capacity | 0.56Tbps | 1.2Tbps | 1.6Tbps | 2.0Tbps | 3.2Tbps |
| Forwarding Rate | 410Mpps | 880Mpps | 1,320Mpps | 1,760Mpps | 2,030Mpps |
| Form Factor | 1U | | | | |
| Dimension | 44*442*378 mm | 44*442*451 mm | 44*442*451 mm | 44*442*378 mm | 44*442*378mm |
| Management Ports | Console, MGMT | | | | |
| USB | 1*USB 2.0 | | | | |
| Power Modules | 2 | | | | |
| Fan Modules | 3 | 3 | 4 | 4 | 4 |
| Max Power Consumption | 59W | 130W | 160W | 171W | 224W |
| Typical Power Consumption | 44W | 95W | 125W | 112W | 172W |
| Airflow | Front-to-Rear | Front-to-Rear / Rear-to-Front | Front-to-Rear | Front-to-Rear | Front-to-Rear |
| Operating Temperature | 0~45°C | | | | |
| Software Features | <p>Ethernet & Interfaces Full/Half duplex, auto-negotiation, Jumbo Frame, Port-xconnect, Flow control, Storm control, Port isolation, L2 protocol tunnel, Store-and-forward / Cut-through</p> <p>VLAN & MAC Management Access/Trunk VLAN, QinQ, VLAN Mapping, Private/Voice/Guest VLAN MAC learning/aging, static/dynamic entries, MAC flapping detection, Port Bridge</p> <p>Link Aggregation & Redundancy Static & LACP, Load balancing (SLB/DLB/RR), Weighted LAG, Self-healing, MLAG, Smart Link</p> <p>Ethernet Protection & Ring STP/RSTP/MSTP, ERPS/G.8031/G.8032, Loopback detection, BPDU/Root/Loop guard</p> <p>IPv4/IPv6 Routing & Multicast Static & dynamic routing (RIP/OSPF/IS-IS/BGP), ECMP, Policy-based routing (PBR), ARP, VRF, uRPF Multicast: IGMP/MLD/PIM, MVR, Fast leave, SSM mapping</p> | | <p>IP Tunnels & Virtual Networks VxLAN, GRE, NVGRE, GENEVE, VARP, Overlay network, BGP EVPN, L2 protocol passthrough, DCBX/PFC</p> <p>Device Reliability & OAM BFD, VRRP/Track, Ethernet OAM (EFM/CFM/Y.1731), Loopback, Fault detection & recovery</p> <p>QoS & Traffic Management Classification (COS/DSCP/ACL), Queue scheduling, Shaping/Policing, Congestion control (SP/WDRR/WRED/ECN), Traffic statistics, Flow mirroring</p> <p>Security & Access Control AAA (RADIUS/TACACS+), SSH, Dot1x, MAC/IP ACL, ARP inspection, IP source guard, Port security, DDoS prevention, CoPP</p> <p>Network Management & Automation DHCP/IPv6 DHCP, SNMP v1/v2c/v3, WEB/RPC-API/CLI/OVSDB, Smart config, RMON, sFlow, IP SLA, IPFIX, NTP/PTP, Logs & alarms</p> <p>Maintenance & Diagnostics Reboot scheduling, Software/UBoot upgrade, File upload/download, Debug, VCT, Ping/Traceroute/L2Ping, UDLD, Loopback, CPU & memory monitoring</p> | | |

Stackable Managed Switch

Stackable Managed Switches



| Model | CSL3CS-08X44S04C-HAD-B | CSL3CS-12X08G-2A-B | CSL3LRS-04X24GP-B | CSL3LRS-06X48G-B |
|----------------------------|---|---------------------|--|----------------------|
| Fixed Ports | | | | |
| Port Number | 56 | 20 | 28 | 54 |
| RJ45 Port | 4*10/100/1000M Combo(RJ45/SFP) | 8*10/100/1000M RJ45 | 24*10/100/1000M RJ45 | 48*10/100/1000M RJ45 |
| Fiber Port | 44*1G SFP, 8*1G/10G SFP+ | 12*1G/10G SFP+ | 4*1G/10G SFP+ | 6*1G/10G SFP+ |
| Performance | | | | |
| Switching Capacity | 176Gbps | 176Gbps | 128Gbps | 216Gbps |
| Packet Forwarding Rate | 132Mpps | 132Mpps | 96Mpps | 162Mpps |
| MAC | 32K | 32K | 16K | 32K |
| Buffer | 3M | 2M | 1.5M | 2M |
| Jumbo Frame | 9K Bytes | | | |
| Management | | | | |
| Management | L3: MPLS/ QoS/BVSS virtual-stacking, EAPS and ERPS, URPF, LLDPISU, VRRP/ VLAN/ Spanning Tree/Multicast/ IPv4/ IPv6, IPv6 Static Routing, RIPng, OSPFv3, BGP4+/GMP Snooping, IGMP Fast Leave, etc. | | L3 Lite: VLAN/ Spanning Tree/Multicast/ Static route, RIP, OSPF, IPv4/v6 dual stack/IPV6/ QoS Port isolation, Port security, and "IP+MAC+port" binding,DHCP Snooping/ MD5, SHA-256, RSA-1024, AES256/ Static/ LACP link aggregation, Interface backup/ EAPS and ERPS/ NTP, ZTP, etc. | |
| Power | | | | |
| Input Voltage Range | Hot-swappable AC100~240V, DC36-72V | Dual AC100~240V | AC100~240V | AC100~240V |
| Consumption | < 69W | < 35W | 370W (PoE) | < 48W |
| PoE Port and Protocol | / | / | Port 1-24 802.3af/at | / |
| Physical and Environmental | | | | |
| Dimension (LxWxH) | 440*350*44mm | 440*315*44mm | 441.1*207.5*44mm | 440*280*44mm |
| Net Weight | 6kg | 3.6kg | 3kg | 4.3kg |
| Operating Temperature | 0°C~+50°C | | | |

Battery and Hot-swappable Switch

Battery & Hot-swappable Switches



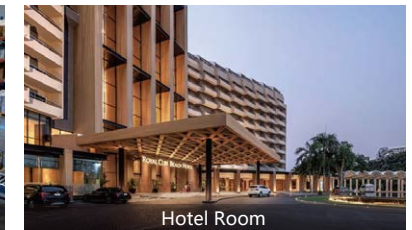
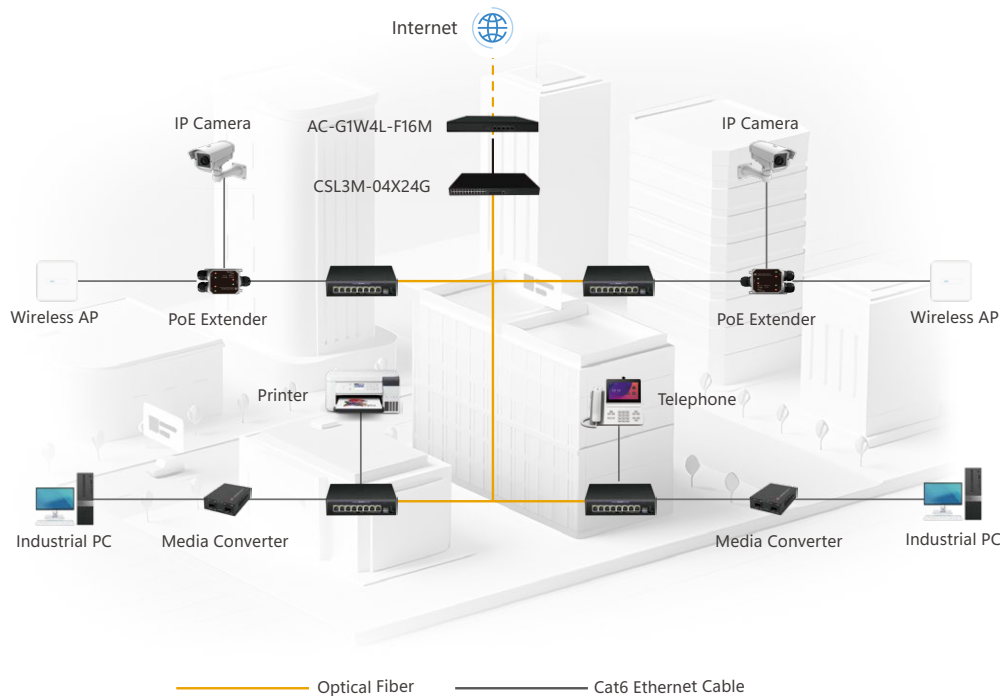
| Model | CSL3LM-04X16S08C-UB-L | CSL3LM-04X24G-B-L | CSL3M-04X08C16GP-H2AU-L | CSL3M-04X48S-H2DU-L |
|----------------------------|--|---|-------------------------------------|---|
| Fixed Ports | | | | |
| Port Number | 28 | 36 | 28 | 52 |
| RJ45 Port | 8*1000M Combo(RJ45/SFP) | 24*10/100/1000M RJ45 | 16*10/100/1000M RJ45, 8*1000M Combo | / |
| Fiber Port | 4*1G/2.5G/10G SFP+, 16*100/1000M SFP | 4*1G/2.5G/10G SFP+ | 4*1G/2.5G/10G SFP+ | 4*1G/2.5G/10G SFP+, 48*100/1000M SFP |
| Performance | | | | |
| Switching Capacity | 128Gbps | | 352Gbps | |
| Packet Forwarding Rate | 190.4Mpps | | 520Mpps | |
| MAC | 16K | | | |
| Buffer | 12M | | | |
| Jumbo Frame | 10K Bytes | | | |
| Management | | | | |
| Management | L3 Lite: WEB/SNMP/VLAN/QoS/RMON/LLDP/IGMP/Mirror/QinQ/Link Aggregation/DDM/ACL/SSH/IPv6 Management/DHCP/NTP/FTP/TFTP/ Telnet Server/Ping/Tracert Detection/RSTP/MSTP/ERPS Ring Network/802.1X/Radius/Multicast/Remote Power Failure Alarm/Static Routing/Direct Routing/ARP L3: Dynamic Routing Protocols such as OSPF, RIP, VRRP, BGP, ISIS, etc. | | | |
| Power | | | | |
| Input Voltage Range | AC100~240V Automatically switching to 12V rechargeable battery when the primary power supply 220V fails | Hot-swappable 1+1 Redundant PSUs Dual AC100~240V | | Hot-swappable 1+1 Redundant PSUs Dual DC24/48V |
| Consumption | ≤40W | ≤440W(PoE) | | ≤60W |
| PoE Port and Protocol | / | Port 1-16 802.3af/at | | / |
| Physical and Environmental | | | | |
| Dimension (LxWxH) | 440*245*44mm | | 440*300*44mm | |
| Net Weight | 4.23kg | 3.88kg | 4.1kg | 6.1kg |
| Operating Temperature | -10°C~+50°C | | | |

ACCESS NETWORK



The Access Network Switches are designed for SME offices, chain stores, factory workshops, and hotel room networks, adopt a flexible fiber-to-edge architecture to connect IP cameras, wireless APs, industrial PCs, printers, and VoIP devices through Gigabit Ethernet and optical fiber. Rich Layer 2, Layer 3 Lite and Layer 3 features, including VLAN/QinQ, QoS, static routing, and IGMP snooping, ensure efficient traffic control and service isolation. Network reliability is enhanced with ERPS ring protection and STP compatibility, while secure access authentication is provided by 802.1X and Radius. Easy WEB/SNMP management allows for stable, scalable, and cost-effective access network deployment.

Application



- 802.1X + Radius
- VLAN / QinQ
- Static Routing
- ERPS + RSTP / MSTP
- QoS
- IGMP Snooping

Managed PoE Switch

Managed PoE Switches



| Model | CSL3LM-04X24GP-AC5L | CSL3LM-04S32GP-L | CSL3LR-04C24GP-Z | CSL3R-06X48GP-Z |
|----------------------------|--|----------------------|--|----------------------|
| Fixed Ports | | | | |
| Port Number | 28 | 36 | 28 | 54 |
| RJ45 Port | 24*10/100/1000M RJ45 | 32*10/100/1000M RJ45 | 24*10/100/1000M RJ45, 4*1000M Combo(RJ45/SFP) | 48*10/100/1000M RJ45 |
| Fiber Port | 4*1G/2.5G/10G SFP+ | 4*1G/2.5G SFP | / | 6*1G/2.5G/10G SFP+ |
| Performance | | | | |
| Switching Capacity | 128Gbps | 84Gbps | 56Gbps | 216Gbps |
| Packet Forwarding Rate | 190Mpps | 125Mpps | 41.616Mpps | 160.7Mpps |
| MAC | 16K | | | |
| Buffer | 12M | | | |
| Jumbo Frame | 10K Bytes | | | |
| Management | | | | |
| Management | L3 Lite: WEB/SNMP/VLAN/QoS/RMON/LLDP/IGMP/Mirror/QinQ/ Link Aggregation/DDM/ACL/SSH/IPv6 Management/DHCP/NTP/FTP/TFTP/ Telnet Server/Ping/Tracert Detection/RSTP/MSTP/ERPS Ring Network/802.1X/Radius/ Multicast/Remote Power Failure Alarm/Static Routing/Direct Routing/ARP | | L3 Lite: WEB/SNMP/VLAN/QoS/RMON/LLDP/IGMP Snooping/Mirror/QinQ/ Link Aggregation/DDM/ACL/SSH/IPv6 Management/DHCP/NTP/FTP/TFTP/Telnet Server/ Ping/Tracert Detection/RSTP/MSTP/ERPS Ring Network/802.1X/Radius/Multicast/ PoE watchdog/IPv4/IPv6/Static Routing/Direct Routing/ARP L3: Dynamic Routing Protocols such as OSPF, RIP, VRRP, etc. | |
| Power | | | | |
| Input Voltage Range | AC100~240V | | | |
| Consumption | ≤248W (PoE) | ≤440W (PoE) | ≤300W (PoE) | ≤400W (PoE) |
| PoE Port and Protocol | Port 1-24 802.3af/at | Port 1-32 802.3af/at | Port 1-24 802.3af/at | Port 1-48 802.3af/at |
| Physical and Environmental | | | | |
| Dimension (LxWxH) | 440*180*45mm | 440*300*44mm | 440*284*44mm | 440*270*44mm |
| Net Weight | 2.77kg | 4.94kg | 3.4kg | 4.4kg |
| Operating Temperature | -10°C~+50°C | | | |

Multi-Gigabit Switch

Multi-Gigabit Switches



| Model | CSR-02X04MGP-Z | CSWR-01X08MGP-Z | CSL3R-0008XG-Z | CSL3R-06X24MG-U-Z |
|----------------------------|--------------------------|--------------------------|--|---------------------------|
| Fixed Ports | | | | |
| Port Number | 6 | 9 | 8 | 30 |
| RJ45 Port | 4*10/100/1000M/2.5G RJ45 | 8*10/100/1000M/2.5G RJ45 | 8*1000M/2.5/5/10G RJ45 | 24*10/100/1000M/2.5G RJ45 |
| Fiber Port | 2*1G/2.5G/10G SFP+ | 1*1G/2.5G/10G SFP+ | / | 6*1G/2.5G/10G SFP+ |
| Performance | | | | |
| Switching Capacity | 60Gbps | | 160Gbps | 240Gbps |
| Packet Forwarding Rate | 44.64Mpps | | 119.04Mpps | 178.56Mpps |
| MAC | 4K | | 16K | 32K |
| Buffer | 8.1M | | 12M | 16M |
| Jumbo Frame | 16K Bytes | 13K Bytes | 10K Bytes | 16K Bytes |
| Management | | | | |
| Management | / | Web Smart | L3: WEB/SNMP/VLAN/QoS/RMON/LLDP/IGMP Snooping/Mirror/QinQ/Link Aggregation/DDM/ACL/SSH/IPv6 Management/DHCP/NTP/FTP/TFTP/Telnet Server/Ping/Tracert Detection/RSTP/MSTP/ERPS Ring Network/802.1X/Radius/Multicast/PoE watchdog/IPv4/IPv6 Static Routing/Direct Routing/ARP/Dynamic Routing Protocols such as OSPF, RIP, VRRP, etc. | |
| Power | | | | |
| Input Voltage Range | AC100~240V | | | |
| Consumption | ≤72W (PoE) | ≤135W (PoE) | ≤60W | ≤400W (PoE) |
| PoE Port and Protocol | Port 1-4 802.3af/at | Port 1-8 802.3af/at | / | Port 1-24 802.3af/at |
| Physical and Environmental | | | | |
| Dimension (LxWxH) | 190*140*44mm | | 270*181*44mm | 440*280*44mm |
| Net Weight | 0.75kg | 0.73kg | 1.32kg | 3.8kg |
| Operating Temperature | -10°C~+50°C | | | |

MPPT Solar Switch

MPPT Solar PoE Switches



| Model | CSSAIR-02S04GHP-J | CSSAIR-0008GHP-J | CSSL3LR-02S08GP-15-S | CSSL3LR-02S08GP-15A-S |
|----------------------------|---|------------------------|---|--------------------------|
| Fixed Ports | | | | |
| Port Number | 6 | 8 | 10 | 10 |
| RJ45 Port | 4*10/100/1000M RJ45 | 8*10/100/1000M RJ45 | 8*10/100/1000M RJ45 | 8*10/100/1000M RJ45 |
| Fiber Port | 2*1000M SFP | / | 2*1000M SFP | 2*1000M SFP |
| Performance | | | | |
| Switching Capacity | 56Gbps | 20Gbps | | |
| Packet Forwarding Rate | 40.32Mpps | 15Mpps | 14.88Mpps | |
| MAC | 8K | 4K | 8K | |
| Buffer | 4.1M | 2.5M | 4.1M | |
| Jumbo Frame | 10K Bytes | | | |
| Management | | | | |
| Management | Built-in 0.96" OLED screen that shows status, measurements, statistics, and alarms for power generation, charging, and system conditions. DIP 1-2 ON: 24V Enable; OFF: 48V Enable DIP 3 ON: PoE Watchdog Enable; OFF: PoE Watchdog Disable DIP 4 ON: Fiber Watchdog Enable; OFF: Fiber Watchdog Disable | | L3 Lite: WEB/SNMP/VLAN/QoS/RMON/LLDP/IGMP Snooping/Mirror/QinQ/ Link Aggregation/DDM/ACL/SSH/IPV6 Management/DHCP/NTP/FTP/TFTP/Telnet Server/Ping/ Tracert Detection/RSTP/MSTP/ERPS Ring Network/802.1X/Radius/Multicast/PoE watchdog/IPV4/ IPV6 Static Routing/Direct Routing/ARP | |
| Power | | | | |
| Input Voltage Range | Input Withstand Voltage: 60V Charging Current: 20A Discharge Power: 10A 240W 36V Solar Panel Charging 24V Battery; 18V Solar Panel Charging 12V Battery Daily Power Generation (Sunny Day): 1450wh Daily Power Generation (Rainy Day): 145wh Support Lead Acid/LiFePO4/Ternary Lithium Batteries 12V/24V | | 12V/24V Solar Panel + 12V/24V battery, Max. 1200W; AC90~265V, Max. 300W Battery Max. Charging Current 18A | |
| Consumption | 12V Battery: ≤120W (PoE) 24V Battery: ≤300W (PoE) | | ≤120W (PoE) | |
| PoE Port and Protocol | Port 1-2 Auto 24V/48V PoE; Port 3-4 802.3af/at/bt | Port 1-8 802.3af/at/bt | Port 1-8 802.3af/at/bt (Port 1 802.3bt) | Port 1-8 Auto 24/48V PoE |
| Physical and Environmental | | | | |
| Dimension (LxWxH) | 209*166*53mm | | 330*190*45mm | |
| Net Weight | 1kg | | 3.4kg | |
| Operating Temperature | -40°C~+55°C | | -20°C~+65°C | |

AI PoE Switch

AI PoE Switches



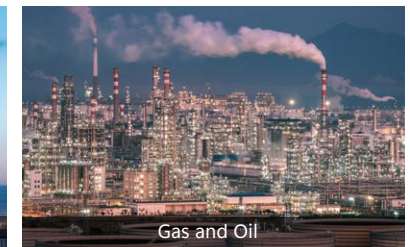
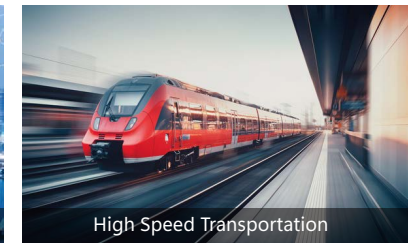
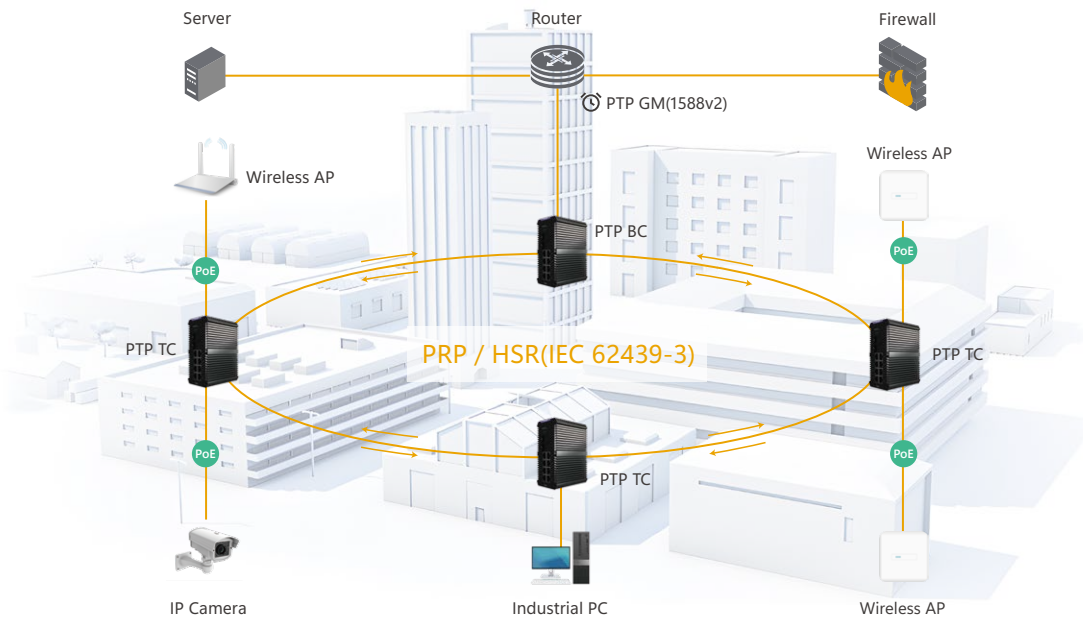
| Model | CSAIR-0006GHP-Z | CSAIR-01S09GHP-Z | CSAIR-02S18GHP-Z | CSAIR-02S26GHP-Z |
|----------------------------|--------------------------------------|---|--|--|
| Fixed Ports | | | | |
| Port Number | 6 | 10 | 20 | 28 |
| RJ45 Port | 6*10/100/1000M RJ45 | 9*10/100/1000M RJ45 | 18*10/100/1000M RJ45 | 26*10/100/1000M RJ45 |
| Fiber Port | / | 1*1000M SFP | 2*1000M SFP | 2*1000M SFP |
| DIP Switch | | | | |
| 1 | PoE Watchdog | | | |
| 2 | 250m Extension | | | |
| 3 | Port Isolation | | | |
| 4 | Storm Control | | | |
| Performance | | | | |
| Switching Capacity | 12Gbps | 20Gbps | 56Gbps | 56Gbps |
| Packet Forwarding Rate | 8.9Mpps | 14.88Mpps | 29.76Mpps | 41.66Mpps |
| MAC | 4K | 2K | 8K | |
| Buffer | 2M | | 4.1M | |
| Jumbo Frame | 10K Bytes | | | |
| Power | | | | |
| Input Voltage Range | AC100~240V | | | |
| Consumption | ≤65W(PoE) | ≤120W (PoE) | ≤300W (PoE) | ≤400W (PoE) |
| PoE Port and Protocol | Port 1-4 802.3af/at (Port 1 802.3bt) | Port 1-8 802.3af/at (Port 1 -2 802.3bt) | Port 1-16 802.3af/at (Port 1 -2 802.3bt) | Port 1-24 802.3af/at (Port 1 -2 802.3bt) |
| Physical and Environmental | | | | |
| Dimension (LxWxH) | 202*140*44mm | 270*181*44mm | 440*280*44mm | |
| Net Weight | 0.7kg | 1.1kg | 3.5kg | |
| Operating Temperature | -10°C~+50°C | | | |

INDUSTRIAL NETWORK



The Industrial Ethernet Switches are built to withstand the toughest environments, delivering a cost-effective, reliable, and secure solution for creating resilient industrial networks. Whether robust switches for point-to-point connections or managed switches for redundancy and network optimization are required, these switches are perfectly suited for high-demand applications in intelligent transportation systems, smart cities, utilities, and surveillance. Equipped with PoE+ and PoE++ power per port, these switches effectively support power-hungry devices such as IP cameras, WLAN access points, and industrial IoT devices, ensuring seamless connectivity and reliable operation. The flexible installation options, including DIN rail or rack mounting, cater to diverse industrial setups, ensure durability in harsh conditions.

Application



- High/Low Temp -40 C~85 C
- IP30-IP67
- Wide Voltage DC12-58V
- Phoenix Terminal to Avoid Explode
- Redundant Power AC/DC
- Integration with Other Industrial Equipment

Industrial Din-rail Switch

Managed Switches



| Model | IDSL3LM-02S04G-AC-Z7 | IDSL3LM-04S08GP-SU-L | IDSL3M-04X16GP-SU-L | IDSL3M-04X24GHP-SU-L |
|----------------------------|--|---|----------------------|---|
| Fixed Ports | | | | |
| Port Number | 6 | 12 | 20 | 28 |
| RJ45 Port | 4*10/100/1000M RJ45 | 8*10/100/1000M RJ45 | 16*10/100/1000M RJ45 | 24*10/100/1000M RJ45 |
| Fiber Port | 2*1G/2.5G SFP | 4*1G/2.5G SFP | 4*1G/2.5G/10G SFP+ | 4*1G/2.5G/10G SFP+ |
| I/O Interface | / | | 1*DI, 1*DO | |
| Performance | | | | |
| Switching Capacity | 36Gbps | 36Gbps | 112Gbps | 128Gbps |
| Packet Forwarding Rate | 13.39Mpps | 53.5Mpps | 166.6Mpps | 190Mpps |
| MAC | | | 16K | |
| Buffer | | | 12M | |
| Jumbo Frame | | | 10K Bytes | |
| Management | | | | |
| Management | L3 Lite: WEB/SNMP/VLAN/QoS/RMON/LLDP/IGMP/Mirror/QinQ/Link Aggregation/DDM/ACL/SSH/IPv6 Management/DHCP/NTP/FTP/TFTP/ Telnet Server/Ping/Tracert Detection/RSTP/MSTP/ERPS Ring Network/802.1X/Radius/Multicast/Remote Power Failure Alarm/Static Routing/Direct Routing/ARP L3: Dynamic Routing Protocols such as OSPF, RIP, VRRP, BGP, ISIS, etc. | | | |
| Power | | | | |
| Input Voltage Range | 1*AC110~240V | Redundant Power Input, DC44-57V (802.3af), DC52-57V (802.3at/802.3bt) | | |
| Consumption | <10W | ≤240W(PoE) | ≤370W(PoE) | |
| PoE Port and Protocol | / | Port 1-8 802.3af/at | Port 1-16 802.3af/at | Port 1-24 802.3af/at (Port 1-4 802.3bt) |
| Physical and Environmental | | | | |
| Dimension (WxDxH) | 67*125*160mm | 54*115*158mm | 110*115*158mm | 110*115*158mm |
| Net Weight | 1.01kg | 1.35kg | 2.2kg | 2.45kg |
| Operating Temperature | -40°C ~ +70°C | | | |

Industrial Din-rail Switch

Unmanaged Switches



| Model | IDSAIM-01S02GP-Z4 | IDSAIM-02S04GP-Z6 | IDSM-04S08GP-Z6 | IDSM-04S24GHP-Z6 |
|----------------------------|---|----------------------|---------------------|---|
| Fixed Ports | | | | |
| Port Number | 3 | 6 | 12 | 28 |
| RJ45 Port | 2*10/100/1000M RJ45 | 4*10/100/1000M RJ45 | 8*10/100/1000M RJ45 | 24*10/100/1000M RJ45 |
| Fiber Port | 1*1000M SFP | 2*1000M SFP | 4*1000M SFP | 4*1000M SFP |
| DIP Switch | | | | |
| 1 | LFP(Link Fault Pass-through) | PoE Watchdog | / | / |
| 2 | SFP 100M/1000M Conversion | VLAN | / | / |
| 3 | Reserved | Port Isolation | / | / |
| 4 | Reset | VIP Power Supply/QoS | / | / |
| Performance | | | | |
| Switching Capacity | 14Gbps | | 36Gbps | 68Gbps |
| Packet Forwarding Rate | 10.416Mpps | | 26.78Mpps | 50.59Mpps |
| Buffer | 1M | | 12M | |
| Jumbo Frame | 10K Bytes | | | |
| Power | | | | |
| Input Voltage Range | Redundant Power Input, Dual DC48-58V(PoE) | | | |
| Consumption | < 65W(PoE) | < 126W(PoE) | < 250W(PoE) | < 386W(PoE) |
| PoE Port and Protocol | Port 1-2 802.3af/at | Port 1-4 802.3af/at | Port 1-8 802.3af/at | Port 1-24 802.3 af/at (Port 1-2, 23-24 802.3bt) |
| Physical and Environmental | | | | |
| Dimension (WxDxH) | 31*91*118mm | 48*104*143mm | | 94*104*118mm |
| Net Weight | 0.4kg | 0.6kg | | 1.0kg |
| Operating Temperature | -40°C ~ +75°C | | | |

Industrial Rack-mount Switch

Managed Switches



| Model | IRSL2M-08S08C-AD-Z8 | IRSL2M-04S08C16GP-2D-Z8 | IRSL3M-04X16S08C-AD-Z8 | IRSL3LM-04X48GP-2D-Z8 |
|----------------------------|---|---|------------------------------------|-----------------------|
| Fixed Ports | | | | |
| Port Number | 16 | 28 | 28 | 52 |
| RJ45 Port | 8*1000M Combo(RJ45/SFP) | 16*10/100/1000M RJ45, 8*1000M Combo(RJ45/SFP) | 8*1000M Combo(RJ45/SFP) | 48*10/100/1000M RJ45 |
| Fiber Port | 8*1G/2.5G SFP | 4*1G/2.5G SFP | 4*1G/2.5G/10G SFP+, 16*1G/2.5G SFP | 4*1G/2.5G/10G SFP+ |
| Performance | | | | |
| Switching Capacity | 160Gbps | | | 336Gbps |
| Packet Forwarding Rate | 95.23Mpps | | | 144Mpps |
| MAC | 16K | | | |
| Buffer | 12M | | | |
| Jumbo Frame | 10K Bytes | | | |
| Management | | | | |
| Management | L2: WEB/SNMP/VLAN/QoS/RMON/LLDP/IGMP Snooping/Mirror/QinQ/Link Aggregation/DDM/ACL/SSH/IPv6 Management/DHCP/NTP/FTP/TFTP/Telnet Server/Ping/Tracert Detection/RSTP/MSTP/ERPS Ring Network/802.1X/Radius/Multicast/PoE watchdog/Remote Power Failure Alarm L3 Lite: IPV4/V6 Static Routing/Direct Routing/ARP L3: Dynamic Routing Protocols such as OSPF, RIP, VRRP, BGP, ISIS, etc. | | | |
| Power | | | | |
| Input Voltage Range | AC100~240V, DC12-58V | Dual DC48-58V | AC100~240V, DC12-58V | Dual DC48-58V |
| Consumption | < 36W | < 396W(PoE) | < 36W | < 400W (PoE) |
| PoE Port and Protocol | / | Port 1-16 802.3af/at | / | Port 1-48 802.3af/at |
| Physical and Environmental | | | | |
| Dimension (WxDxH) | 440*245*44mm | | | |
| Net Weight | 3.6kg | | | |
| Operating Temperature | -40°C ~ +75°C | | | |

Industrial Special Switch

Special Switches



Class A



Bypass



8BT 90W



IP67

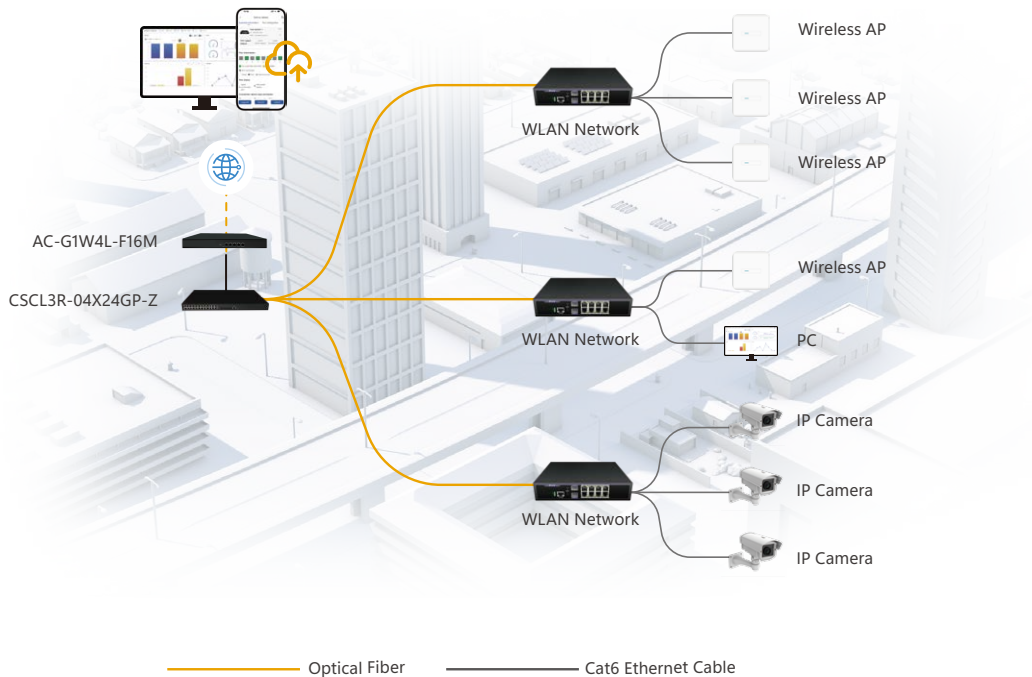
| Model | IDSL3M-04X08GP-AU-Z7 | IDSL2M-02S08GP-2BP-Z7 | IDSL3LM-02S08G8HP-Z8LB | IDSMM-0008GPM12-Z6 |
|----------------------------|---|-----------------------|------------------------|---------------------|
| Fixed Ports | | | | |
| Port Number | 12 | 10 | 10 | 8 |
| RJ45 Port | 8*10/100/1000M RJ45 | 8*10/100/1000M RJ45 | 8*10/100/1000M RJ45 | 8*10/100/1000M M12 |
| Fiber Port | 4*1G/2.5G/10G SFP+ | 2*1G/2.5G SFP | 2*1G/2.5G SFP | / |
| Performance | | | | |
| Switching Capacity | 160Gbps | 36Gbps | | 26Gbps |
| Packet Forwarding Rate | 95.23Mpps | 26.78Mpps | | 19.34Mpps |
| MAC | 16K | | | |
| Buffer | 12M | | | |
| Jumbo Frame | 10K Bytes | | | |
| Management | | | | |
| Management | L2: WEB/SNMP/VLAN/QoS/RMON/LLDP/IGMP Snooping/Mirror/QinQ/Link Aggregation/DDM/ACL/SSH/IPv6 Management/DHCP/NTP/FTP/TFTP/Telnet Server/Ping/Tracert Detection/RSTP/MSTP/ERPS Ring Network/802.1X/Radius/Multicast/PoE watchdog/Remote Power Failure Alarm L3: Dynamic Routing Protocols such as OSPF, RIP, VRRP, BGP, ISIS, etc. | | | / |
| Power | | | | |
| Input Voltage Range | Dual DC48-58V | | | |
| Consumption | < 260W (PoE) | < 250W(PoE) | < 730W(PoE) | < 186W (PoE) |
| PoE Port and Protocol | Port 1-8 802.3af/at | Port 1-8 802.3af/at | Port 1-8 802.3af/at/bt | Port 3-8 802.3af/at |
| Physical and Environmental | | | | |
| Dimension (WxDxH) | 161*115*53mm | 48*104*143mm | 108*104*143mm | 287*182*65.7mm |
| Net Weight | 0.9kg | 0.58kg | 1.15kg | 1.2kg |
| Operating Temperature | -40°C ~ +75°C | -40°C ~ +85°C | -30°C ~ +60°C | -40°C ~ +85°C |

SMART CLOUD PLATFORM

The Smart Cloud (S-Cloud) is an open, scalable Network Management Platform, designed to meet the demands of growing and dynamic infrastructures. It offers flexible deployments and powerful features that drive operational efficiency, helping organizations streamline project management. Whether for small enterprises or large-scale networks, the platform ensures ease of use, reliability, and scalability. The seamless setup, multi-vendor device integration, and simplified configuration make it an ideal solution for diverse network environments. Real-time fault alerts and automatic network topology generation provide proactive management, minimizing downtime and optimizing performance. Users can effortlessly create and manage unlimited projects, track network health with detailed reports, and ensure smooth operations across various applications, from data centers to branch offices.



Application



Effortlessly handle multiple network projects

Streamlined device configuration for rapid deployment

| | | |
|------------|--------------|------------------|
| MQTT Cloud | DHCP Service | Static Routing |
| ERPS | QoS | Link Aggregation |

Smart Cloud Managed Switch

S-Cloud MQTT Managed Switches



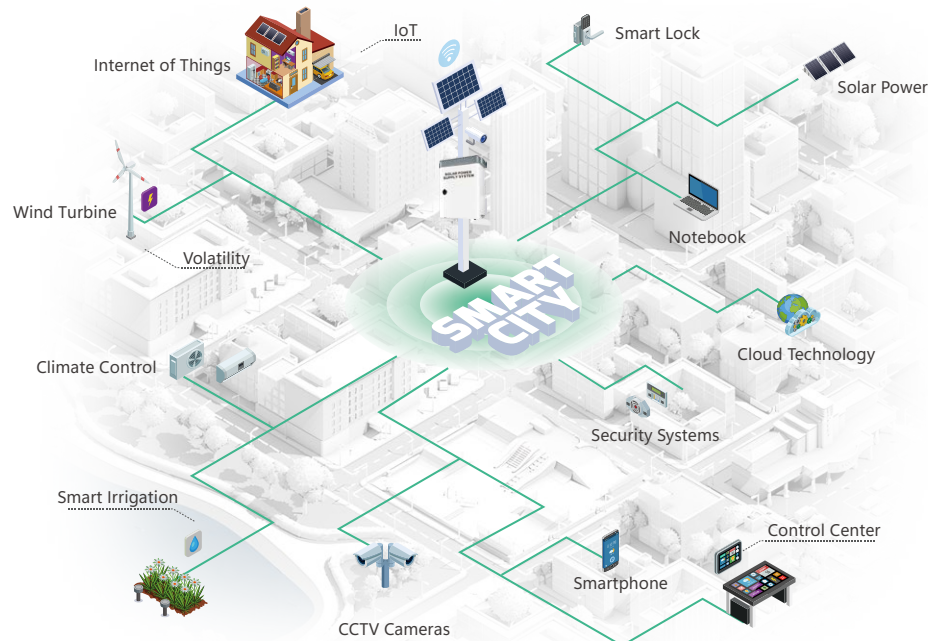
| Model | CSCL3LR-02S08GP-Z | CSCL3LR-04C16GP-Z | CSCL3R-04X24GP-Z | CSCL3R-06X48GP-Z |
|----------------------------|---|---|----------------------|----------------------|
| Fixed Ports | | | | |
| Port Number | 10 | 20 | 28 | 54 |
| RJ45 Port | 8*10/100/1000M RJ45 | 16*10/100/1000M RJ45, 4*1000M Combo(RJ45/SFP) | 24*10/100/1000M RJ45 | 48*10/100/1000M RJ45 |
| Fiber Port | 2*1000M SFP | / | 4*1G/2.5G/10G SFP+ | 6*1G/2.5G/10G SFP+ |
| Performance | | | | |
| Switching Capacity | 20Gbps | 56Gbps | 128Gbps | 216Gbps |
| Packet Forwarding Rate | 14.88Mpps | 29.76Mpps | 95.23Mpps | 160.7Mpps |
| MAC | 8K | | 16K | 32K |
| Buffer | 4.1M | | 12M | 16M |
| Jumbo Frame | 10K Bytes | | | |
| Management | | | | |
| Management | Layer 3 Lite: Support WEB/SNMP/VLAN/QoS/RMON/LLDP/IGMP Snooping/Mirror/QinQ/Link Aggregation/DDM/ACL/SSH/IPv6 Management/DHCP/NTP/FTP/TFTP/Tracert Detection/RSTP/MSTP/ERPS Ring Network/802.1X/Radius/Multicast/PoE watchdog/IPv4/IPv6 Static Routing/Direct Routing/ARP Layer 3 Management: Dynamic Routing Protocols such as OSPF, RIP, VRRP, BGP, ISIS, etc. | | | |
| Power | | | | |
| Input Voltage Range | AC100~240V | | | |
| Consumption | ≤120W (PoE) | ≤300W (PoE) | | ≤400W (PoE) |
| PoE Port and Protocol | Port 1-8 802.3af/at | Port 1-16 802.3af/at | Port 1-24 802.3af/at | Port 1-48 802.3af/at |
| Physical and Environmental | | | | |
| Dimension (LxWxH) | 220*161*44mm | 440*280*44mm | | 440*284*44mm |
| Net Weight | 0.97kg | 3.4kg | 3kg | 4kg |
| Operating Temperature | -10°C~+50°C | | | |

INTEGRATED NETWORK



The Solar and Intelligent Boxes are modular, compact solutions designed for digital new energy low-voltage systems. They seamlessly integrate grid power, solar energy, battery management, network switching, and IoT communication technologies, addressing the growing demand for sustainable, reliable energy solutions. Supporting 4G, 5G, and fiber optic transmission, these cabinets efficiently power both high-power and standard devices in off-grid environments, making them ideal for remote and urban infrastructure. With IP55 protection, surge protection, and a unified management platform for remote monitoring and maintenance, they provide enhanced operational resilience and scalability. By leveraging clean energy and IoT integration, they offer an eco-friendly solution that supports industries in their transition to sustainable, smart infrastructure.

Application



| | | |
|---|-------------|--|
| 1.7" Industrial-grade Full-color OLED | HIGH LIGHTS | Modular Design for Flexibility and Scalability |
| Deliver 12/24/48V Voltages for Different PD | | Online MPPT Automatic Tracking Charging |
| Reverse Connection Protection for 36/24/12/9/5V | | Multiple Safety Protection against Burnout |
| Ternary Lithium/LiFePO4/Lead-acid Batteries | | RS485 for Platform and Seamless Communication |
| Main Power/Solar Power | | Optional 4G/5G/WiFi/GPS Connectivity |



| | | |
|----------------|-----------------------|---|
| Fault Location | Fanless IP55 | Fast Installation |
| Solar Energy | Redundant Power AC/DC | Support Lead-acid/LiFePO4/Ternary Lithium Batteries |

Outdoor Mini PoE Switch Box

Unmanaged & Managed PoE Switch Boxes



| Model | OSBL3LR-02S08GP-Z | OSBL3LM-04X08GP-UA-Z | OSBAIM-01S04GP-Z | OSBAIM-02S08GP-Z |
|----------------------------|---|----------------------|--|---------------------|
| Fixed Ports | | | | |
| Port Number | 10 | 12 | 5 | 10 |
| RJ45 Port | 8*10/100/1000M RJ45 | 8*10/100/1000M RJ45 | 4*10/100/1000M RJ45 | 8*10/100/1000M RJ45 |
| Fiber Port | 2*1000M SFP | 4*1G/2.5G/10G SFP+ | 1*1000M SFP | 2*1000M SFP |
| Performance | | | | |
| Switching Capacity | 20Gbps | 160Gbps | 14Gbps | 26Gbps |
| Packet Forwarding Rate | 14.88Mpps | 95.23Mpps | 10.416Mpps | 19.34Mpps |
| MAC | 8K | 16K | 8K | 16K |
| Buffer | 4.1M | 12M | 1M | 2M |
| Jumbo Frame | 10K Bytes | | | |
| Management | | | | |
| Management | L3 Lite: WEB/SNMP/VLAN/QoS/RMON/LLDP/IGMP Snooping/Mirror/QinQ/Link Aggregation/DDM/ACL/SSH/IPv6 Management/DHCP/NTP/FTP/TFTP/Telnet Server/Ping/Tracert Detection/RSTP/MSTP/ERPS Ring Network/802.1X/Radius/Multicast/PoE watchdog/IPv4/IPv6 Static Routing/Direct Routing/ARP | | DIP Switch: 1-PoE Watchdog; 2-Extension 250m; 3-Port Isolation; 4-VIP Power Supply/QoS | |
| Power | | | | |
| Input Voltage Range | AC100~240V | | | |
| Consumption | <246w (PoE) | <260W (PoE) | <125W (PoE) | <246w (PoE) |
| PoE Port and Protocol | Port 1-8 802.3af/at | | Port 1-4 802.3af/at | Port 1-8 802.3af/at |
| Physical and Environmental | | | | |
| Dimension (LxWxH) | 245*240*34mm | | | |
| Net Weight | 9.2kg | 9.9kg | 8kg | 8.6kg |
| Operating Temperature | -20 C ~+75 C | | | |

IoT Smart Cabinet

Solar & Grid Powered Cabinets



| Model | SIBL2M-02S08GP-Z | SPIBL2M-02S08GP-Z | SPBAIR-02S04GHP-J | SPBR-0008GHP-J |
|----------------------------|---|---|--|-----------------------|
| Switching Network | | | | |
| Port Number | 10 | 10 | 6 | 8 |
| RJ45 Port | 8*10/100/1000M RJ45 | 8*10/100/1000M RJ45 | 4*10/100/1000M RJ45 | 8*10/100/1000M RJ45 |
| Fiber Port | | 2*1000M SFP | | / |
| Specification | | | | |
| Communication Protocol | Integrated multi-protocol access supports transparent transmission, MQTT, TCP/IP, UDP, HTTP, etc. | Serial port transparent transmission, MQTT, TCP/IP, UDP, HTTP, etc. | Standard Modbus RTU | |
| I/O Module | 5*DI, 5*DO | 4*DI, 4*DO | / | |
| Serial Port | 2*RS232, 2*RS485 | 3*RS232/RS485 | 1*RS485 | |
| Fan | DC24V Intelligent Thermostat Fan | DC24V Intelligent Thermostat Fan | Thermostat Fan | |
| Option | 4G/5G/WiFi/GPS | | | |
| Installation | Pole/Wall Mount | | | |
| Management | | | | |
| Management | Web Management Centralized Management of Network Management Platform (MQTT Protocol) | | Built-in 0.96-inch OLED screen that shows status, measurements, statistics, and alarms for power generation, charging, and system conditions. | |
| Power | | | | |
| Input Voltage Range | 2*DC48V, 1*AC220V, 1*AC24V | DC24V | DC12V/DC24V | |
| Power Output | 4*DC12V | 1*AC24V, 1*DC24V, 4*DC12V | Input Withstand Voltage: 60V Charging Current: 20A Discharge Power: 10A 240W Option Solar Panel: 36V 240W Daily Power Generation (Sunny Day): 1450wh Daily Power Generation (Rainy Day): 145wh Support Lead Acid/LiFePO4/Ternary Lithium Batteries 12V/24V | |
| PoE Port and Protocol | Port 1-8 802.3 af/at | Port 1-2 802.3af/at/bt Port 3-4 24V PoE; Port 5-8 802.3 af/at | Port 1-2 Auto 24V/48V PoE Port 3-4 802.3af/at/bt | Port1-8 802.3af/at/bt |
| Physical and Environmental | | | | |
| Dimension (LxWxH) | 535*385*230mm | 550*380*220mm | 486*296*609mm | |
| Net Weight | 18.5kg | 23.8kg | 18.9kg | |
| Operating Temperature | -40 °C ~ +70 °C | | -15 °C ~ +55 °C | |



Accessories

PoE Accessories

| Category | Model | Picture | Features | Operating Environment |
|-------------------------|----------------|---|--|-----------------------|
| PoE Injector | PI-01MGP30-Y |  | Single Port 10/100/1000M/2.5G PoE Injector IEEE802.3af/at Standard, Max. 30 Watts PoE Pin: 1, 2+/3, 6- Input Voltage: AC100~240V PoE data & power transmission distance 100m Net Weight: 200g Dimension: 121*50*36mm | 0°C~+50°C |
| PoE Injector | PI-01GHP90-D |  | Single Port 10/100/1000M PoE Injector IEEE802.3af/at/bt Standard, Max. 90 Watts PoE: 1, 2+/3, 6-; 4, 5+/7, 8- Input Voltage: AC100~240V PoE data & power transmission distance 100m Net Weight: 400g Dimension: 144*57*40mm | 0°C~+50°C |
| Industrial PoE Injector | IPI-01XGHP90-Y |  | Industrial Single Port 10/100/1000M/2.5G/5G/10G PoE Injector IEEE802.3af/at/bt Standard, Max. 90 Watts Input Voltage: DC12-48V PoE data & power transmission distance 100m Net Weight: 250g Dimension: 95*70*30mm | -40°C~+80°C |
| Outdoor PoE Extender | OPE-11GP30-X |  | IP66 Outdoor Gigabit PoE Extender 30W 2 RJ45 ports(1 in 1 out) Support IEEE802.3af/at, max. output 22W | -25°C~+55°C |
| Outdoor PoE Extender | OPE-11GHP90-S |  | IP67 Outdoor Gigabit PoE Extender 2 RJ45 ports(1GE 90W in 1GE 90W +1GE 30W out) (1000/100M Speed: Max. 150meters; 10M Speed: Max. 250meters) Support IEEE802.3af/at/bt, max. output 90W | -40°C~+80°C |
| PoE Splitter | PS-01GP15-D |  | Gigabit PoE Splitter DC Jack: 5.5*2.1mm (Optional: DC Jack: 5.5*2.5mm/Type-C/Micro-USB) IEEE802.3af Standard PoE In: 37-57V(15.4W); DC Out:12V/1A (12.95W) Mode A or Mode B Isol: 1.5KV Total power: 13W Dimension: 81*28*24mm | 0°C~+50°C |
| Outdoor PoE Splitter | OPS-01MGHP90-S |  | IP67 Outdoor Waterproof PoE Splitter PoE in: 1x10M/100M/1G/2.5G, Max. 90W Output: DC12V Max.7.5A, Max. 90W Net Weight: 310g Dimension: 150*77*43mm | -40°C~+80°C |

Media Converter

| Category | Model | Picture | Features | Operating Environment |
|--------------------------------|-------------|---|---|-----------------------|
| Standard Media Converter | MC-01S01G |  | 10/100/1000Base-T to 100/1000Base-X Auto-Negotiation, Auto-MDI/MDIX 100M/10G Converter Optional SC/FC/ST/SFP Optional External Power: DC5V, 1A Dimension: 93*71*27mm | 0°C~+50°C |
| LFP Media Converter | MCAI-01S01G |  | 10/100/1000Base-T to 1000Base-X Auto-Negotiation, Auto-MDI/MDIX 100M/10G Converter Optional SC/FC/ST/SFP Optional External Power: DC5V, 1A Dimension: 93*71*27mm | -20~70°C |
| Mini Media Converter | MMC-01S01G |  | 10/100/1000Base-T to 100/1000Base-X Auto-Negotiation, Auto-MDI/MDIX 100M/10G Converter SC/FC/ST/SFP Optional External Power: DC5V, 1A Dimension: 79*23*18mm | -20~70°C |
| SFP to SFP Converter | MC-02S00 |  | Single Mode to Multi-mode and Vice-versa Auto-Negotiation, Auto-MDI/MDIX 100/1000M/10G Converter Optional SC/FC/ST/SFP Optional External Power DC5V,1A Dimension: 94*70.5*26.5mm | 0°C~+50°C |
| Industrial Media Converter | IDS-01S01G |  | 10/100/1000Base-T to 100/1000Base-X Auto-Negotiation, Auto-MDI/MDIX Dual power DC12~48V Input Dimension: 95*70*30mm | -40~75°C |
| Industrial PoE Media Converter | IDS-01S01GP |  | 10/100/1000Base-T to 1000Base-X PoE Watchdog/ VLAN/ port Isolation/ VIP/QoS Dual Power DC48~58V Input Dimension: 143*104*48mm | -40~75°C |

Connectivity Cable

DAC
1-7Meters



800G OSFP112
DAC



800G QSFP-DD
DAC



400G PAM4 QSFP-DD
DAC



400G PAM4 QSFP-DD
to 2*200G QSFP56
DAC



200G PAM4 QSFP56
DAC



200G to 2*100G QSFP56 PAM4
DAC



100G QSFP28
DAC



100G QSFP28 to 4*25G SFP28
DAC



25G SFP28
DAC



10G SFP+
DAC

AOC
1-30Meters



800G OSFP112
AOC



400G QSFP56-DD
AOC



400G QSFP56-DD to 2*200G QSFP56
AOC



200G QSFP56
AOC



200G QSFP56 to 2*100G QSFP56
AOC



100G QSFP28
AOC



100G QSFP28 to 4*25G SFP28
AOC



40G QSFP+
AOC



25G SFP28
AOC



10G SFP+
AOC

ACC
1-5Meters

AEC
1-7Meters



800G OSFP112
ACC



400G QSFP112
ACC



800G OSFP112
AEC

Optical Transceiver

1.6T
800G



1.6T OSFP 2xDR4
SMF



800G OSFP open top 2xVR4
MMF



800G OSFP open top / RHS 2xDR4
SMF



800G QSFP-DD VR8 / DR8
MMF / SMF

400G



400G QSFP-DD SR8
MMF



400G QSFP-DD DR4
SMF



400G QSFP-DD LR8
PAM4 SMF



400G QSFP-DD FR4
SMF

200G
100G



200G QSFP-DD SR8 / FR8
MMF



200G QSFP-DD LR4 / DR4
SMF



100G QSFP28 SR4
MMF



100G QSFP28 LR4 / ER4 / ZR4
SMF

50G
40G
32G



50G QSFP28 LR / ER / ZR
SMF



40G QSFP+ SR4
MMF



40G QSFP+ LR4 / ER4 / ZR4
SMF



32G SFP28 SR
MMF

25G
10G



25G SFP28 SR / LR / BIDI / CWDM
SMF



25G SFP28 CWDM
SMF



10G SFP+ SR / LR / ER / ZR / BIDI
SMF



10G SFP+ CWDM
SMF



CONTACT US

Lanao Communication Technology Limited

📍 Factory: #A5, Silicon Valley Industrial Park, Longhua, Shenzhen, 518110, P.R.C.

📍 Sales Branch: 2106B, #3D, Cloud Park Phase 1, Bantian, Longgang, Shenzhen, 518129, P.R.C.

©2026 Lanao Communication All Rights Reserved